



ELECTRONIC COPY

LG781603909
Report verification at igi.org



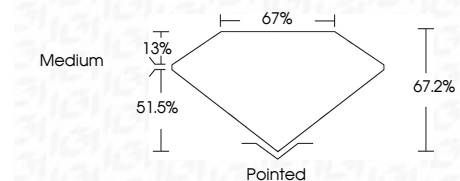
March 13, 2026
IGI Report Number LG781603909
Description LABORATORY GROWN DIAMOND

Shape and Cutting Style CUT CORNERED RECTANGULAR MODIFIED BRILLIANT

Measurements 11.34 X 8.01 X 5.38 MM

GRADING RESULTS

Carat Weight 4.19 CARATS
Color Grade D
Clarity Grade VVS 2



ADDITIONAL GRADING INFORMATION

Polish EXCELLENT
Symmetry EXCELLENT
Fluorescence NONE
Inscription(s) LG781603909
Comments: This Laboratory Grown Diamond was created by Chemical Vapor Deposition (CVD) growth process. Type IIa



March 13, 2026
IGI Report Number LG781603909
Description LABORATORY GROWN DIAMOND
Shape and Cutting Style CUT CORNERED RECTANGULAR MODIFIED BRILLIANT
Measurements 11.34 X 8.01 X 5.38 MM

GRADING RESULTS

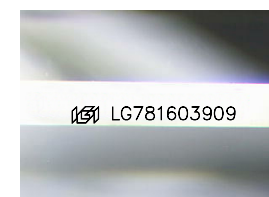
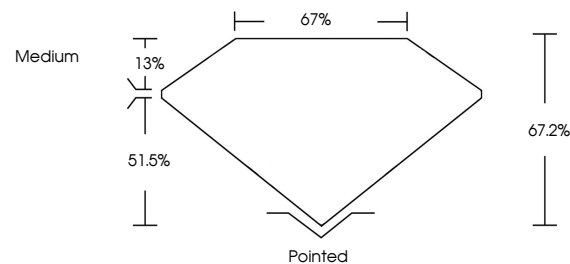
Carat Weight 4.19 CARATS
Color Grade D
Clarity Grade VVS 2

ADDITIONAL GRADING INFORMATION

Polish EXCELLENT
Symmetry EXCELLENT
Fluorescence NONE
Inscription(s) LG781603909

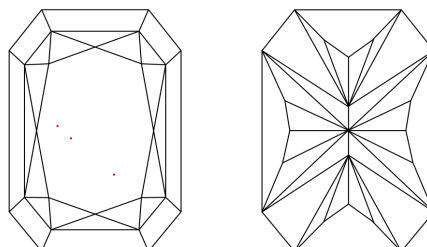
Comments: This Laboratory Grown Diamond was created by Chemical Vapor Deposition (CVD) growth process. Type IIa

PROPORTIONS



Sample Image Used

CLARITY CHARACTERISTICS



KEY TO SYMBOLS

Red symbols indicate internal characteristics.
Green symbols indicate external characteristics.

COLOR

D E F G H I J Faint Very Light Light

CLARITY

FL IF VVS 1-2 VS 1-2 SI 1-2 I 1-3
Flawless Internally Flawless Very Very Slightly Included Very Slightly Included Slightly Included Included

March 13, 2026
IGI Report No LG781603909
CUT CORNERED RECT. MODIFIED BRILLIANT
4.19 CARATS
D
4.19 CARATS
D
VVS 2
67.2%
67%
Medium
Pointed
EXCELLENT
EXCELLENT
NONE
LG781603909
Comments: This Laboratory Grown Diamond was created by Chemical Vapor Deposition (CVD) growth process. Type IIa