



ELECTRONIC COPY

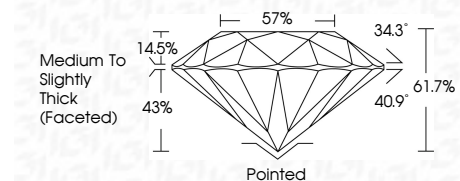
LG781602868 Report verification at igi.org



March 24, 2026 IGI Report Number LG781602868 Description LABORATORY GROWN DIAMOND Shape and Cutting Style ROUND BRILLIANT Measurements 7.36 - 7.40 X 4.55 MM

GRADING RESULTS

Carat Weight 1.53 CARAT Color Grade D Clarity Grade VS 1 Cut Grade IDEAL



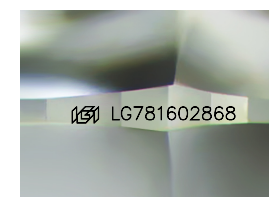
ADDITIONAL GRADING INFORMATION

Polish EXCELLENT Symmetry EXCELLENT Fluorescence NONE Inscription(s) LG781602868 Comments: As Grown - No indication of post-growth treatment. This Laboratory Grown Diamond was created by High Pressure High Temperature (HPHT) growth process. Type II



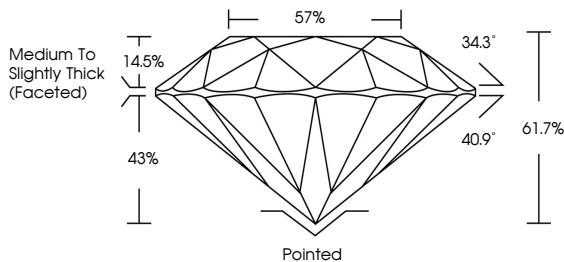
March 24, 2026 IGI Report No LG781602868 ROUND BRILLIANT 7.36 - 7.40 X 4.55 MM 1.53 CARAT D VS 1 IDEAL 61.7% 57% Medium To Slightly Thick (Faceted) Pointed EXCELLENT EXCELLENT NONE LG781602868

Comments: As Grown - No indication of post-growth treatment. This Laboratory Grown Diamond was created by High Pressure High Temperature (HPHT) growth process. Type II

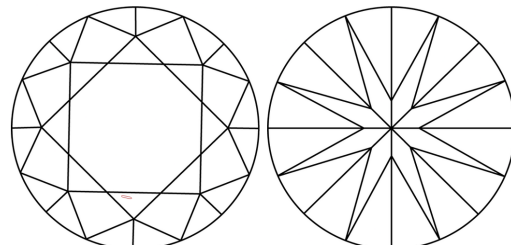


Sample Image Used

PROPORTIONS



CLARITY CHARACTERISTICS



KEY TO SYMBOLS

Red symbols indicate internal characteristics. Green symbols indicate external characteristics.

COLOR

Color scale table with categories D, E, F, G, H, I, J, Faint, Very Light, Light

CLARITY

Clarity scale table with categories FL, IF, VS 1-2, VS 1-2, SI 1-2, I 1-3, Flawless, Internally Flawless, Very Very Slightly Included, Very Slightly Included, Slightly Included, Included

