



ELECTRONIC COPY

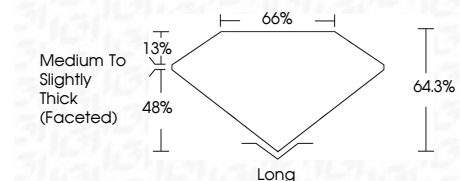
LG781602231
Report verification at igi.org



March 20, 2026
IGI Report Number **LG781602231**
Description **LABORATORY GROWN DIAMOND**
Shape and Cutting Style **CUSHION MIXED CUT**
Measurements **9.13 X 6.27 X 4.03 MM**

GRADING RESULTS

Carat Weight **2.08 CARATS**
Color Grade **E**
Clarity Grade **VVS 2**



ADDITIONAL GRADING INFORMATION

Polish **EXCELLENT**
Symmetry **EXCELLENT**
Fluorescence **NONE**
Inscription(s) **IGI LG781602231**
Comments: This Laboratory Grown Diamond was created by Chemical Vapor Deposition (CVD) growth process. Type IIa



March 20, 2026
IGI Report No LG781602231
CUSHION MIXED CUT
9.13 X 6.27 X 4.03 MM
2.08 CARATS
E
VVS 2
64.3%
48%
13%
Medium to Slightly Thick (Faceted)
Long
EXCELLENT
EXCELLENT
NONE
IGI LG781602231
Comments: This Laboratory Grown Diamond was created by Chemical Vapor Deposition (CVD) growth process. Type IIa

LABORATORY GROWN DIAMOND REPORT

March 20, 2026
IGI Report Number **LG781602231**
Description **LABORATORY GROWN DIAMOND**
Shape and Cutting Style **CUSHION MIXED CUT**
Measurements **9.13 X 6.27 X 4.03 MM**

GRADING RESULTS

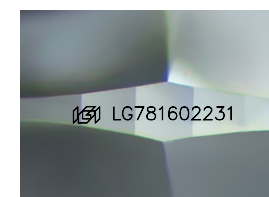
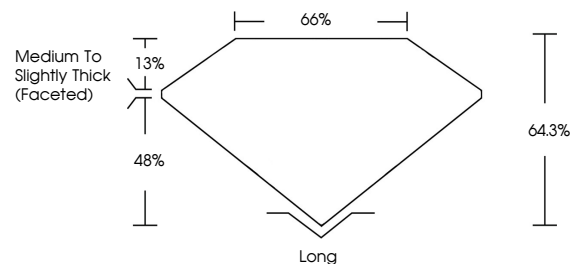
Carat Weight **2.08 CARATS**
Color Grade **E**
Clarity Grade **VVS 2**

ADDITIONAL GRADING INFORMATION

Polish **EXCELLENT**
Symmetry **EXCELLENT**
Fluorescence **NONE**
Inscription(s) **IGI LG781602231**

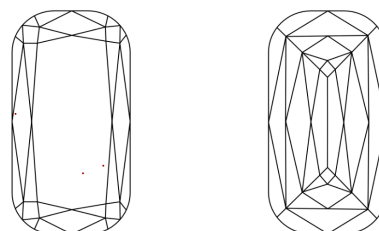
Comments: This Laboratory Grown Diamond was created by Chemical Vapor Deposition (CVD) growth process. Type IIa

PROPORTIONS



Sample Image Used

CLARITY CHARACTERISTICS



KEY TO SYMBOLS

Red symbols indicate internal characteristics.
Green symbols indicate external characteristics.

COLOR

D E F G H I J Faint Very Light Light

CLARITY

| FL | IF | VVS ¹⁻² | VS ¹⁻² | SI ¹⁻² | I ¹⁻³ |
|----------|---------------------|-----------------------------|------------------------|-------------------|------------------|
| Flawless | Internally Flawless | Very Very Slightly Included | Very Slightly Included | Slightly Included | Included |

