



**ELECTRONIC COPY**

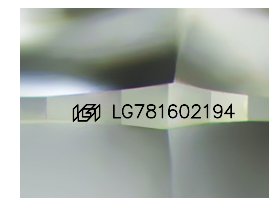
LG781602194  
Report verification at igi.org



March 23, 2026  
IGI Report Number **LG781602194**  
Description **LABORATORY GROWN DIAMOND**  
Shape and Cutting Style **ROUND BRILLIANT**  
Measurements **7.46 - 7.49 X 4.63 MM**

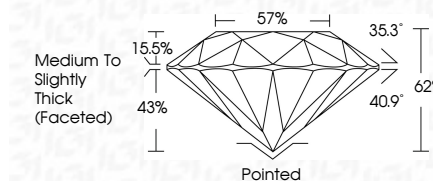
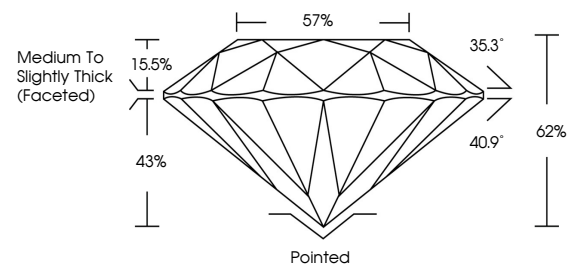
**GRADING RESULTS**

Carat Weight **1.59 CARAT**  
Color Grade **F**  
Clarity Grade **VS 1**  
Cut Grade **IDEAL**

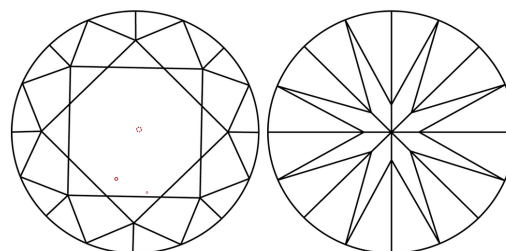


Sample Image Used

**PROPORTIONS**



**CLARITY CHARACTERISTICS**



**KEY TO SYMBOLS**

Red symbols indicate internal characteristics.  
Green symbols indicate external characteristics.

**COLOR**

D E F G H I J Faint Very Light Light

**CLARITY**

FL	IF	VS <sup>1-2</sup>	VS <sup>1-2</sup>	SI <sup>1-2</sup>	I <sup>1-3</sup>
Flawless	Internally Flawless	Very Very Slightly Included	Very Slightly Included	Slightly Included	Included

**ADDITIONAL GRADING INFORMATION**

Polish **EXCELLENT**  
Symmetry **EXCELLENT**  
Fluorescence **NONE**  
Inscription(s) **IGI LG781602194**  
Comments: This Laboratory Grown Diamond was created by Chemical Vapor Deposition (CVD) growth process. Type IIa



**IGI**



March 23, 2026  
IGI Report No LG781602194  
**ROUND BRILLIANT**  
1.59 CARAT  
Color Grade **F**  
Clarity Grade **VS 1**  
Cut Grade **IDEAL**  
Depth **62%**  
Table **57%**  
Girdle **Medium To Slightly Thick (Faceted)**  
Culet **Pointed**  
Polish **EXCELLENT**  
Symmetry **EXCELLENT**  
Fluorescence **NONE**  
Inscription(s) **IGI LG781602194**  
Comments: This Laboratory Grown Diamond was created by Chemical Vapor Deposition (CVD) growth process. Type IIa