



ELECTRONIC COPY

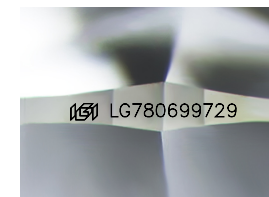
LG780699729
Report verification at igi.org



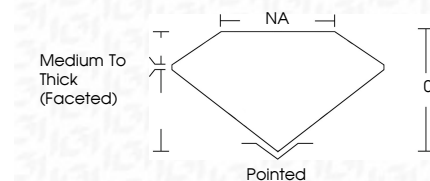
March 15, 2026
IGI Report Number **LG780699729**
Description **LABORATORY GROWN DIAMOND**
Shape and Cutting Style **FLOWER MIXED CUT**
Measurements **7.83 X 7.73 X 4.93 MM**

GRADING RESULTS

Carat Weight **1.72 CARAT**
Color Grade **E**
Clarity Grade **VVS 2**



Sample Image Used



ADDITIONAL GRADING INFORMATION

Polish **EXCELLENT**
Symmetry **EXCELLENT**
Fluorescence **NONE**
Inscription(s) **IGI LG780699729**
Comments: This Laboratory Grown Diamond was created by Chemical Vapor Deposition (CVD) growth process. Type IIa



March 15, 2026
IGI Report No **LG780699729**
FLOWER MIXED CUT
Carat Weight **1.72 CARAT**
Color Grade **E**
Clarity Grade **VVS 2**
Depth **0%**
Table **NA**
Girdle **Medium To Thick (Faceted)**
Culet **Pointed**
Polish **EXCELLENT**
Symmetry **EXCELLENT**
Fluorescence **NONE**
Inscription(s) **IGI LG780699729**

Comments: This Laboratory Grown Diamond was created by Chemical Vapor Deposition (CVD) growth process. Type IIa

LABORATORY GROWN DIAMOND REPORT

March 15, 2026
IGI Report Number **LG780699729**
Description **LABORATORY GROWN DIAMOND**
Shape and Cutting Style **FLOWER MIXED CUT**
Measurements **7.83 X 7.73 X 4.93 MM**

GRADING RESULTS

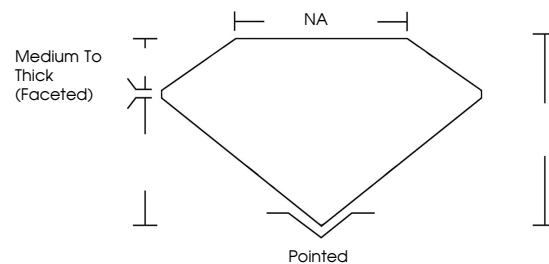
Carat Weight **1.72 CARAT**
Color Grade **E**
Clarity Grade **VVS 2**

ADDITIONAL GRADING INFORMATION

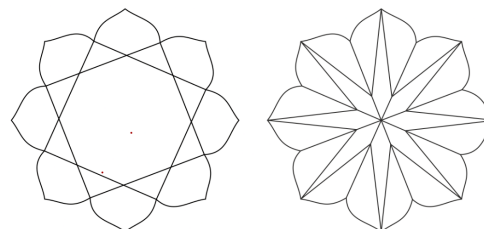
Polish **EXCELLENT**
Symmetry **EXCELLENT**
Fluorescence **NONE**
Inscription(s) **IGI LG780699729**

Comments: This Laboratory Grown Diamond was created by Chemical Vapor Deposition (CVD) growth process. Type IIa

PROPORTIONS



CLARITY CHARACTERISTICS



KEY TO SYMBOLS

Red symbols indicate internal characteristics.
Green symbols indicate external characteristics.

COLOR

D E F G H I J Faint Very Light Light

CLARITY

FL	IF	VVS ¹⁻²	VS ¹⁻²	SI ¹⁻²	I ¹⁻³
Flawless	Internally Flawless	Very Very Slightly Included	Very Slightly Included	Slightly Included	Included

