



ELECTRONIC COPY

LG780696612
Report verification at igi.org



April 10, 2026
IGI Report Number LG780696612
Description LABORATORY GROWN DIAMOND
Shape and Cutting Style ROUND BRILLIANT
Measurements 6.82 - 6.85 X 4.22 MM
GRADING RESULTS
Carat Weight 1.22 CARAT
Color Grade FANCY INTENSE GREEN
Clarity Grade INTERNALLY FLAWLESS
Cut Grade IDEAL

April 10, 2026
IGI Report Number LG780696612
Description LABORATORY GROWN DIAMOND
Shape and Cutting Style ROUND BRILLIANT
Measurements 6.82 - 6.85 X 4.22 MM

GRADING RESULTS

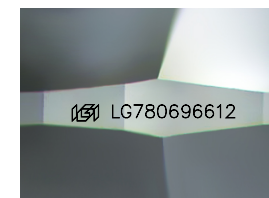
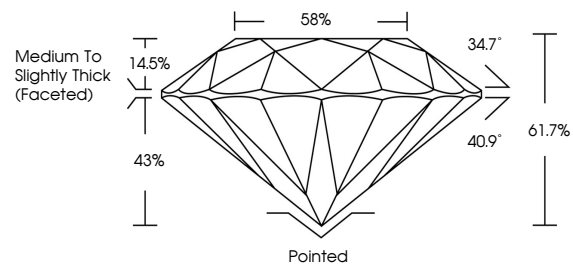
Carat Weight 1.22 CARAT
Color Grade FANCY INTENSE GREEN
Clarity Grade INTERNALLY FLAWLESS
Cut Grade IDEAL

ADDITIONAL GRADING INFORMATION

Polish EXCELLENT
Symmetry EXCELLENT
Fluorescence NONE
Inscription(s) LG780696612

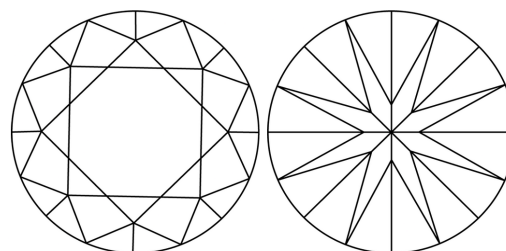
Comments: HEARTS & ARROWS
This Laboratory Grown Diamond was created by Chemical Vapor Deposition (CVD) growth process. Indications of post-growth treatment.

PROPORTIONS



Sample Image Used

CLARITY CHARACTERISTICS



KEY TO SYMBOLS

Red symbols indicate internal characteristics.
Green symbols indicate external characteristics.

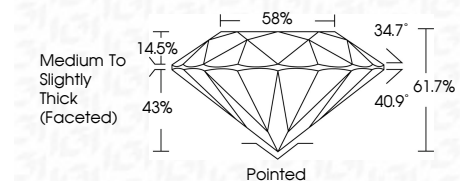


COLOR

D E F G H I J Faint Very Light Light

CLARITY

FL IF VS 1-2 VS 1-2 SI 1-2 I 1-3
Flawless Internally Flawless Very Very Slightly Included Very Slightly Included Slightly Included Included



ADDITIONAL GRADING INFORMATION

Polish EXCELLENT
Symmetry EXCELLENT
Fluorescence NONE
Inscription(s) LG780696612
Comments: HEARTS & ARROWS
This Laboratory Grown Diamond was created by Chemical Vapor Deposition (CVD) growth process. Indications of post-growth treatment.



April 10, 2026
IGI Report No LG780696612
ROUND BRILLIANT
6.82 - 6.85 X 4.22 MM
1.22 CARAT
FANCY INTENSE GREEN
Color Grade
Clarity Grade IF
Depth 61.7%
Table 58%
Girdle Medium To Slightly Thick (Faceted)
Culet Pointed
Polish EXCELLENT
Symmetry EXCELLENT
Fluorescence NONE
Inscription(s) LG780696612
Comments: HEARTS & ARROWS
This Laboratory Grown Diamond was created by Chemical Vapor Deposition (CVD) growth process. Indications of post-growth treatment.