



**ELECTRONIC COPY**

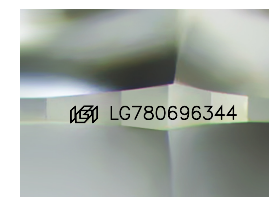
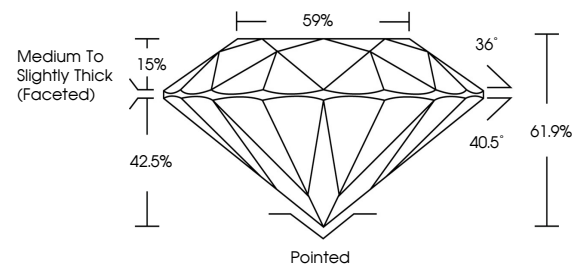
LG780696344  
Report verification at igi.org



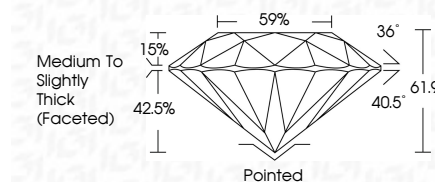
April 9, 2026  
IGI Report Number **LG780696344**  
Description **LABORATORY GROWN DIAMOND**  
Shape and Cutting Style **ROUND BRILLIANT**  
Measurements **8.00 - 8.03 X 4.96 MM**  
**GRADING RESULTS**  
Carat Weight **2.01 CARATS**  
Color Grade **D**  
Clarity Grade **VS 1**  
Cut Grade **EXCELLENT**

April 9, 2026  
IGI Report Number **LG780696344**  
Description **LABORATORY GROWN DIAMOND**  
Shape and Cutting Style **ROUND BRILLIANT**  
Measurements **8.00 - 8.03 X 4.96 MM**  
**GRADING RESULTS**  
Carat Weight **2.01 CARATS**  
Color Grade **D**  
Clarity Grade **VS 1**  
Cut Grade **EXCELLENT**

**PROPORTIONS**



Sample Image Used



**ADDITIONAL GRADING INFORMATION**  
Polish **EXCELLENT**  
Symmetry **EXCELLENT**  
Fluorescence **NONE**  
Inscription(s) **IGI LG780696344**

Comments: This Laboratory Grown Diamond was created by Chemical Vapor Deposition (CVD) growth process. Type IIa

**COLOR**

D E F G H I J Faint Very Light Light

**CLARITY**

FL	IF	VS <sup>1-2</sup>	VS <sup>1-2</sup>	SI <sup>1-2</sup>	I <sup>1-3</sup>
Flawless	Internally Flawless	Very Very Slightly Included	Very Slightly Included	Slightly Included	Included

**ADDITIONAL GRADING INFORMATION**

Polish **EXCELLENT**  
Symmetry **EXCELLENT**  
Fluorescence **NONE**  
Inscription(s) **IGI LG780696344**  
Comments: This Laboratory Grown Diamond was created by Chemical Vapor Deposition (CVD) growth process. Type IIa



**IGI**



April 9, 2026  
IGI Report No LG780696344  
**ROUND BRILLIANT**  
8.00 - 8.03 X 4.96 MM  
2.01 CARATS  
D  
Color Grade **EXCELLENT**  
Clarity Grade **VS 1**  
Depth **61.9%**  
Table **59%**  
Girdle **Medium To Slightly Thick (Faceted)**  
Culet **Pointed**  
Polish **EXCELLENT**  
Symmetry **EXCELLENT**  
Fluorescence **NONE**  
Inscriptions(s) **IGI LG780696344**  
Comments: This Laboratory Grown Diamond was created by Chemical Vapor Deposition (CVD) growth process. Type IIa