



ELECTRONIC COPY

LG780695657
Report verification at igi.org



March 11, 2026

IGI Report Number **LG780695657**

Description **LABORATORY GROWN DIAMOND**

Shape and Cutting Style **MOVAL BRILLIANT CUT**

Measurements **9.28 X 5.34 X 3.43 MM**

GRADING RESULTS

Carat Weight **1.09 CARAT**

Color Grade **E**

Clarity Grade **VVS 2**

March 11, 2026

IGI Report Number **LG780695657**

Description **LABORATORY GROWN DIAMOND**

Shape and Cutting Style **MOVAL BRILLIANT CUT**

Measurements **9.28 X 5.34 X 3.43 MM**

GRADING RESULTS

Carat Weight **1.09 CARAT**

Color Grade **E**

Clarity Grade **VVS 2**

ADDITIONAL GRADING INFORMATION

Polish **EXCELLENT**

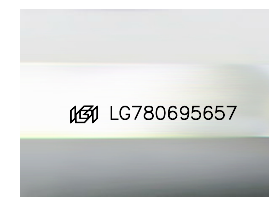
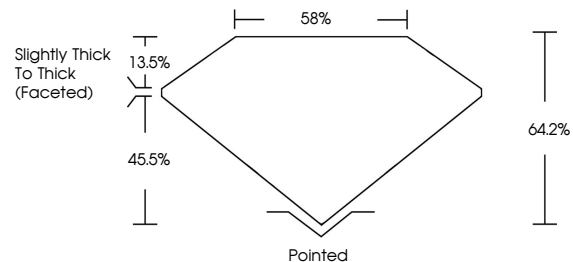
Symmetry **EXCELLENT**

Fluorescence **NONE**

Inscription(s) **IGI LG780695657**

Comments: This Laboratory Grown Diamond was created by Chemical Vapor Deposition (CVD) growth process. Type IIa

PROPORTIONS



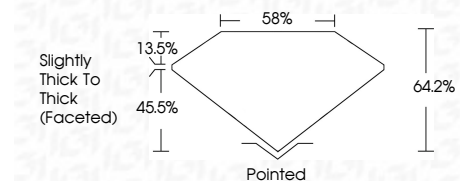
Sample Image Used

COLOR

D E F G H I J Faint Very Light Light

CLARITY

FL	IF	VVS ¹⁻²	VS ¹⁻²	SI ¹⁻²	I ¹⁻³
Flawless	Internally Flawless	Very Very Slightly Included	Very Slightly Included	Slightly Included	Included



ADDITIONAL GRADING INFORMATION

Polish **EXCELLENT**

Symmetry **EXCELLENT**

Fluorescence **NONE**

Inscription(s) **IGI LG780695657**

Comments: This Laboratory Grown Diamond was created by Chemical Vapor Deposition (CVD) growth process. Type IIa



March 11, 2026
IGI Report No LG780695657
MOVAL BRILLIANT CUT
9.28 X 5.34 X 3.43 MM
1.09 CARAT
E
VVS 2
64.2%
85%
Slightly Thick To Thick (Faceted)
Pointed
EXCELLENT
EXCELLENT
NONE
IGI LG780695657
Comments: This Laboratory Grown Diamond was created by Chemical Vapor Deposition (CVD) growth process. Type IIa