



March 8, 2026

IGI Report Number **LG780694774**

**OVAL BRILLIANT
LABORATORY GROWN DIAMOND**

8.18 X 5.60 X 3.45 MM

Carat Weight **0.98 CARAT**
Color Grade **D**
Clarity Grade **VS 1**
Polish **EXCELLENT**
Symmetry **EXCELLENT**
Fluorescence **NONE**
Inscription(s) **IGI LG780694774**

Comments: This Laboratory Grown Diamond was created by Chemical Vapor Deposition (CVD) growth process. Type IIa

LABORATORY GROWN DIAMOND REPORT

March 8, 2026

IGI Report Number

LG780694774

Description

LABORATORY GROWN DIAMOND

Shape and Cutting Style

OVAL BRILLIANT

Measurements

8.18 X 5.60 X 3.45 MM

GRADING RESULTS

Carat Weight

0.98 CARAT

Color Grade

D

Clarity Grade

VS 1

ADDITIONAL GRADING INFORMATION

Polish

EXCELLENT

Symmetry

EXCELLENT

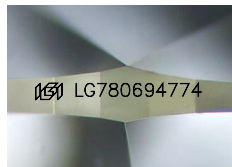
Fluorescence

NONE

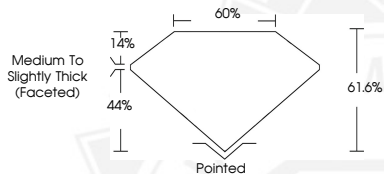
Inscription(s)

IGI LG780694774

Comments: This Laboratory Grown Diamond was created by Chemical Vapor Deposition (CVD) growth process. Type IIa



Sample Image Used



March 8, 2026

IGI Report Number **LG780694774**

**OVAL BRILLIANT
LABORATORY GROWN DIAMOND**

8.18 X 5.60 X 3.45 MM

Carat Weight **0.98 CARAT**
Color Grade **D**
Clarity Grade **VS 1**
Polish **EXCELLENT**
Symmetry **EXCELLENT**
Fluorescence **NONE**
Inscription(s) **IGI LG780694774**

Comments: This Laboratory Grown Diamond was created by Chemical Vapor Deposition (CVD) growth process. Type IIa



THIS DOCUMENT WAS PRODUCED WITH THE FOLLOWING SECURITY MEASURES: SPECIAL DOCUMENT PAPER, INK SCREENS, WATERMARK, BACKGROUND DESIGNS, HOLOGRAM AND OTHER SECURITY FEATURES NOT LISTED AND DO EXCEED DOCUMENT SECURITY INDUSTRY GUIDELINES.