



ELECTRONIC COPY

LG780694116
Report verification at igi.org



March 20, 2026
IGI Report Number **LG780694116**
Description **LABORATORY GROWN DIAMOND**
Shape and Cutting Style **CUSHION MODIFIED BRILLIANT**
Measurements **8.96 X 6.44 X 3.86 MM**
GRADING RESULTS
Carat Weight **2.04 CARATS**
Color Grade **FANCY LIGHT BROWN**
Clarity Grade **VVS 2**

LABORATORY GROWN DIAMOND REPORT

March 20, 2026
IGI Report Number **LG780694116**
Description **LABORATORY GROWN DIAMOND**
Shape and Cutting Style **CUSHION MODIFIED BRILLIANT**
Measurements **8.96 X 6.44 X 3.86 MM**

GRADING RESULTS

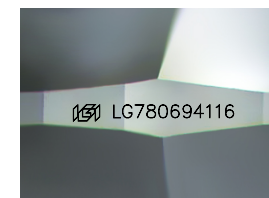
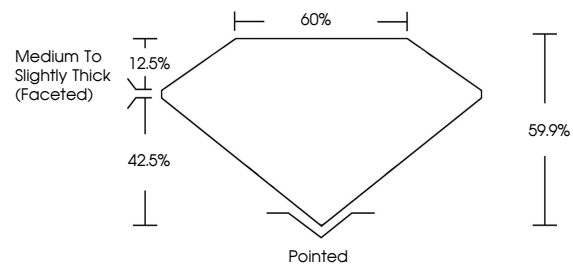
Carat Weight **2.04 CARATS**
Color Grade **FANCY LIGHT BROWN**
Clarity Grade **VVS 2**

ADDITIONAL GRADING INFORMATION

Polish **EXCELLENT**
Symmetry **EXCELLENT**
Fluorescence **NONE**
Inscription(s) **IGI LG780694116**

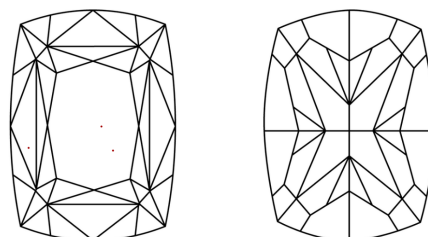
Comments: This Laboratory Grown Diamond was created by Chemical Vapor Deposition (CVD) growth process.
Indications of post-growth treatment.

PROPORTIONS



Sample Image Used

CLARITY CHARACTERISTICS



KEY TO SYMBOLS

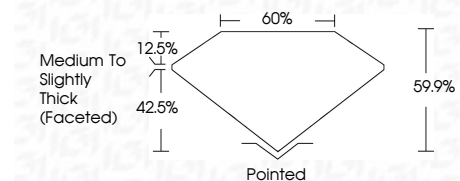
Red symbols indicate internal characteristics.
Green symbols indicate external characteristics.

COLOR

D E F G H I J Faint Very Light Light

CLARITY

FL	IF	VVS ¹⁻²	VS ¹⁻²	SI ¹⁻²	I ¹⁻³
Flawless	Internally Flawless	Very Very Slightly Included	Very Slightly Included	Slightly Included	Included



ADDITIONAL GRADING INFORMATION

Polish **EXCELLENT**
Symmetry **EXCELLENT**
Fluorescence **NONE**
Inscription(s) **IGI LG780694116**
Comments: This Laboratory Grown Diamond was created by Chemical Vapor Deposition (CVD) growth process.
Indications of post-growth treatment.



March 20, 2026
IGI Report No **LG780694116**
CUSHION MODIFIED BRILLIANT
8.96 X 6.44 X 3.86 MM
Carat Weight **2.04 CARATS**
Color Grade **FANCY LIGHT BROWN**
Clarity Grade **VVS 2**
Depth **59.9%**
Table **60%**
Girdle **Medium to Slightly Thick (Faceted)**
Culet **Pointed**
Polish **EXCELLENT**
Symmetry **EXCELLENT**
Fluorescence **NONE**
Inscription(s) **IGI LG780694116**
Comments: This Laboratory Grown Diamond was created by Chemical Vapor Deposition (CVD) growth process.
Indications of post-growth treatment.