



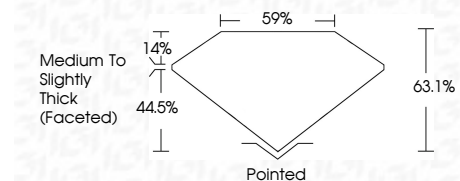
ELECTRONIC COPY

LG780690806 Report verification at igi.org



March 14, 2026 IGI Report Number LG780690806 Description LABORATORY GROWN DIAMOND Shape and Cutting Style OVAL BRILLIANT Measurements 8.22 X 5.72 X 3.61 MM

GRADING RESULTS Carat Weight 1.07 CARAT Color Grade F Clarity Grade VS 1



ADDITIONAL GRADING INFORMATION Polish EXCELLENT Symmetry EXCELLENT Fluorescence NONE Inscription(s) IGI LG780690806 Comments: This Laboratory Grown Diamond was created by Chemical Vapor Deposition (CVD) growth process. Type IIa



March 14, 2026 IGI Report No LG780690806 OVAL BRILLIANT 1.07 CARAT F VS 1 63.1% 44.5% Medium to Slightly Thick (Faceted) Pointed EXCELLENT EXCELLENT NONE IGI LG780690806 Comments: This Laboratory Grown Diamond was created by Chemical Vapor Deposition (CVD) growth process. Type IIa

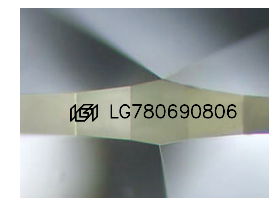
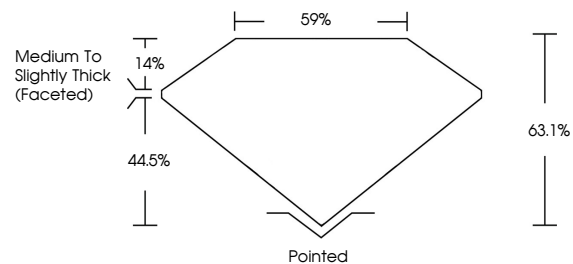
March 14, 2026 IGI Report Number LG780690806 Description LABORATORY GROWN DIAMOND Shape and Cutting Style OVAL BRILLIANT Measurements 8.22 X 5.72 X 3.61 MM

GRADING RESULTS Carat Weight 1.07 CARAT Color Grade F Clarity Grade VS 1

ADDITIONAL GRADING INFORMATION Polish EXCELLENT Symmetry EXCELLENT Fluorescence NONE Inscription(s) IGI LG780690806

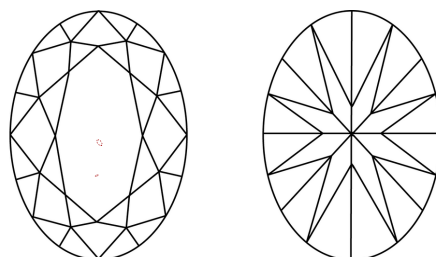
Comments: This Laboratory Grown Diamond was created by Chemical Vapor Deposition (CVD) growth process. Type IIa

PROPORTIONS



Sample Image Used

CLARITY CHARACTERISTICS



KEY TO SYMBOLS

Red symbols indicate internal characteristics. Green symbols indicate external characteristics.

COLOR

D E F G H I J Faint Very Light Light

CLARITY

FL IF VS 1-2 VS 2-3 SI 1-2 I 1-3 Flawless Internally Flawless Very Very Slightly Included Very Slightly Included Slightly Included Included

