



ELECTRONIC COPY

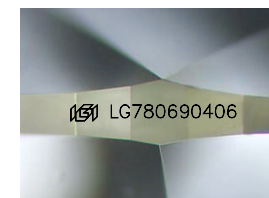
LG780690406
Report verification at igi.org



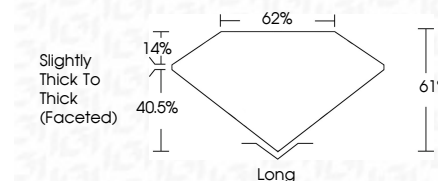
March 11, 2026
IGI Report Number **LG780690406**
Description **LABORATORY GROWN DIAMOND**
Shape and Cutting Style **OVAL MIXED CUT**
Measurements **12.57 X 6.18 X 3.77 MM**

GRADING RESULTS

Carat Weight **2.41 CARATS**
Color Grade **E**
Clarity Grade **VVS 2**



Sample Image Used



ADDITIONAL GRADING INFORMATION

Polish **EXCELLENT**
Symmetry **EXCELLENT**
Fluorescence **NONE**
Inscription(s) **IGI LG780690406**
Comments: This Laboratory Grown Diamond was created by Chemical Vapor Deposition (CVD) growth process. Type IIa



March 11, 2026
IGI Report No **LG780690406**
OVAL MIXED CUT
12.57 X 6.18 X 3.77 MM
Carat Weight **2.41 CARATS**
Color Grade **E**
Clarity Grade **VVS 2**
Depth **61%**
Table **62%**
Girdle **Slightly Thick To Thick (Faceted)**
Culet **Long**
Polish **EXCELLENT**
Symmetry **EXCELLENT**
Fluorescence **NONE**
Inscription(s) **IGI LG780690406**

Comments: This Laboratory Grown Diamond was created by Chemical Vapor Deposition (CVD) growth process. Type IIa

March 11, 2026
IGI Report Number **LG780690406**
Description **LABORATORY GROWN DIAMOND**
Shape and Cutting Style **OVAL MIXED CUT**
Measurements **12.57 X 6.18 X 3.77 MM**

GRADING RESULTS

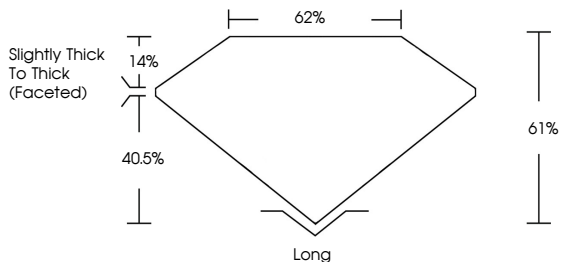
Carat Weight **2.41 CARATS**
Color Grade **E**
Clarity Grade **VVS 2**

ADDITIONAL GRADING INFORMATION

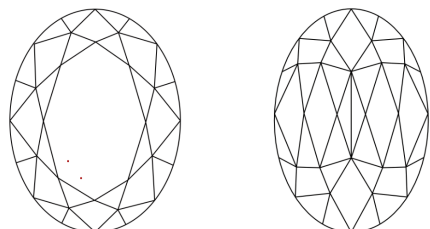
Polish **EXCELLENT**
Symmetry **EXCELLENT**
Fluorescence **NONE**
Inscription(s) **IGI LG780690406**

Comments: This Laboratory Grown Diamond was created by Chemical Vapor Deposition (CVD) growth process. Type IIa

PROPORTIONS



CLARITY CHARACTERISTICS



KEY TO SYMBOLS

Red symbols indicate internal characteristics.
Green symbols indicate external characteristics.

COLOR

D	E	F	G	H	I	J	Faint	Very Light	Light
---	---	---	---	---	---	---	-------	------------	-------

CLARITY

FL	IF	VVS ¹⁻²	VS ¹⁻²	SI ¹⁻²	I ¹⁻³
Flawless	Internally Flawless	Very Very Slightly Included	Very Slightly Included	Slightly Included	Included

