



March 9, 2026

IGI Report Number **LG780687866**

**OVAL BRILLIANT  
LABORATORY GROWN DIAMOND  
7.32 X 5.21 X 3.18 MM**

Carat Weight **0.77 CARAT**  
Color Grade **D**  
Clarity Grade **VS 2**  
Polish **VERY GOOD**  
Symmetry **VERY GOOD**  
Fluorescence **NONE**  
Inscription(s) **IGI LG780687866**

Comments: As Grown - No indication of post-growth treatment. This Laboratory Grown Diamond was created by High Pressure High Temperature (HPHT) growth process. Type II

**LABORATORY GROWN DIAMOND REPORT**

March 9, 2026  
IGI Report Number **LG780687866**  
Description **LABORATORY GROWN DIAMOND**  
Shape and Cutting Style **OVAL BRILLIANT**  
Measurements **7.32 X 5.21 X 3.18 MM**

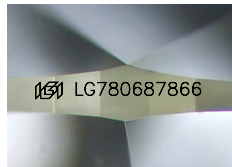
**GRADING RESULTS**

Carat Weight **0.77 CARAT**  
Color Grade **D**  
Clarity Grade **VS 2**

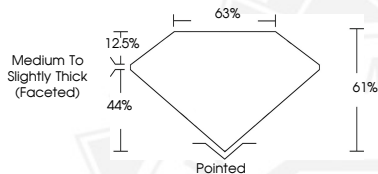
**ADDITIONAL GRADING INFORMATION**

Polish **VERY GOOD**  
Symmetry **VERY GOOD**  
Fluorescence **NONE**  
Inscription(s) **IGI LG780687866**

Comments: As Grown - No indication of post-growth treatment. This Laboratory Grown Diamond was created by High Pressure High Temperature (HPHT) growth process. Type II



Sample Image Used



March 9, 2026

IGI Report Number **LG780687866**

**OVAL BRILLIANT  
LABORATORY GROWN DIAMOND  
7.32 X 5.21 X 3.18 MM**

Carat Weight **0.77 CARAT**  
Color Grade **D**  
Clarity Grade **VS 2**  
Polish **VERY GOOD**  
Symmetry **VERY GOOD**  
Fluorescence **NONE**  
Inscription(s) **IGI LG780687866**

Comments: As Grown - No indication of post-growth treatment. This Laboratory Grown Diamond was created by High Pressure High Temperature (HPHT) growth process. Type II



THIS DOCUMENT WAS PRODUCED WITH THE FOLLOWING SECURITY MEASURES: SPECIAL DOCUMENT PAPER, INK SCREENS, WATERMARK, BACKGROUND DESIGNS, HOLOGRAM AND OTHER SECURITY FEATURES NOT LISTED AND DO EXCEED DOCUMENT SECURITY INDUSTRY GUIDELINES.