



**ELECTRONIC COPY**

LG780686157  
Report verification at igi.org



March 13, 2026

IGI Report Number **LG780686157**

Description **LABORATORY GROWN DIAMOND**

Shape and Cutting Style **ROUND BRILLIANT**

Measurements **7.92 - 7.97 X 5.01 MM**

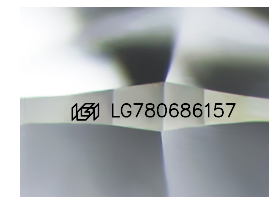
**GRADING RESULTS**

Carat Weight **1.98 CARAT**

Color Grade **F**

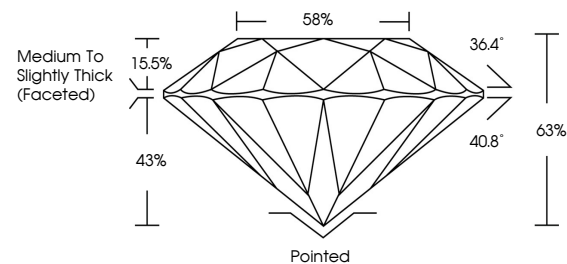
Clarity Grade **VVS 2**

Cut Grade **EXCELLENT**

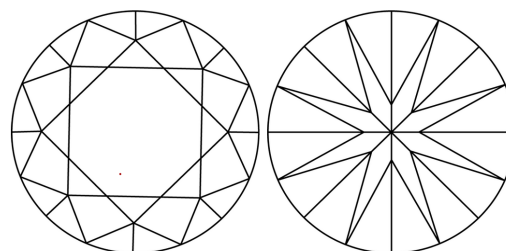


Sample Image Used

**PROPORTIONS**



**CLARITY CHARACTERISTICS**



**KEY TO SYMBOLS**

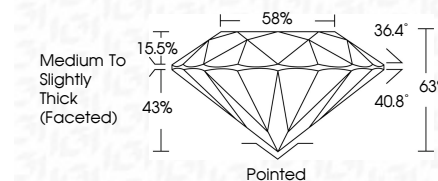
Red symbols indicate internal characteristics.  
Green symbols indicate external characteristics.

**COLOR**

D E F G H I J Faint Very Light Light

**CLARITY**

FL	IF	VVS <sup>1-2</sup>	VS <sup>1-2</sup>	SI <sup>1-2</sup>	I <sup>1-3</sup>
Flawless	Internally Flawless	Very Very Slightly Included	Very Slightly Included	Slightly Included	Included



**ADDITIONAL GRADING INFORMATION**

Polish **EXCELLENT**

Symmetry **EXCELLENT**

Fluorescence **NONE**

Inscription(s) **IGI LG780686157**

Comments: This Laboratory Grown Diamond was created by Chemical Vapor Deposition (CVD) growth process. Type IIa



March 13, 2026  
IGI Report No LG780686157  
ROUND BRILLIANT

1.98 CARAT  
F  
VVS 2  
EXCELLENT  
63%  
68%  
Medium To Slightly Thick (Faceted)

Pointed  
EXCELLENT  
EXCELLENT  
NONE  
IGI LG780686157

Culet  
Polish  
Symmetry  
Fluorescence  
Inscription(s)

Comments: This Laboratory Grown Diamond was created by Chemical Vapor Deposition (CVD) growth process. Type IIa