



ELECTRONIC COPY

LG780680514 Report verification at igi.org



May 20, 2026 IGI Report Number LG780680514 Description LABORATORY GROWN DIAMOND Shape and Cutting Style CUSHION MODIFIED BRILLIANT Measurements 11.12 X 8.21 X 5.34 MM GRADING RESULTS Carat Weight 4.17 CARATS Color Grade FANCY VIVID PINK Clarity Grade VVS 2

LABORATORY GROWN DIAMOND REPORT

May 20, 2026 IGI Report Number LG780680514 Description LABORATORY GROWN DIAMOND Shape and Cutting Style CUSHION MODIFIED BRILLIANT Measurements 11.12 X 8.21 X 5.34 MM

GRADING RESULTS

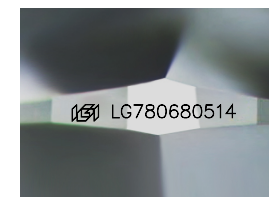
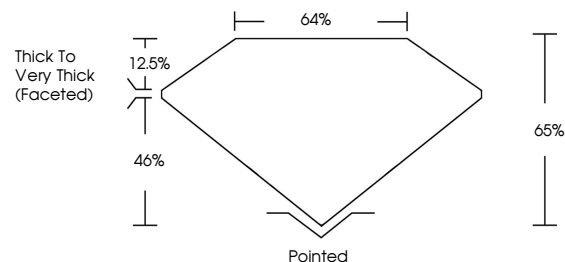
Carat Weight 4.17 CARATS Color Grade FANCY VIVID PINK Clarity Grade VVS 2

ADDITIONAL GRADING INFORMATION

Polish EXCELLENT Symmetry EXCELLENT Fluorescence SLIGHT Inscription(s) IGI LG780680514

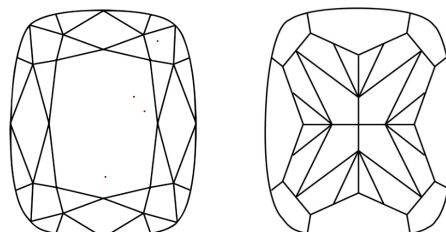
Comments: This Laboratory Grown Diamond was created by Chemical Vapor Deposition (CVD) growth process. Indications of post-growth treatment.

PROPORTIONS



Sample Image Used

CLARITY CHARACTERISTICS



KEY TO SYMBOLS

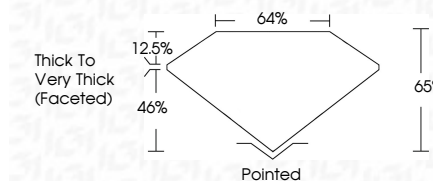
Red symbols indicate internal characteristics. Green symbols indicate external characteristics.

COLOR

D E F G H I J Faint Very Light Light

CLARITY

FL IF VVS 1-2 VS 1-2 SI 1-2 I 1-3 Flawless Internally Flawless Very Very Slightly Included Very Slightly Included Slightly Included Included



ADDITIONAL GRADING INFORMATION

Polish EXCELLENT Symmetry EXCELLENT Fluorescence SLIGHT Inscription(s) IGI LG780680514 Comments: This Laboratory Grown Diamond was created by Chemical Vapor Deposition (CVD) growth process. Indications of post-growth treatment.



May 20, 2026 IGI Report No LG780680514 CUSHION MODIFIED BRILLIANT 11.12 X 8.21 X 5.34 MM 4.17 CARATS FANCY VIVID PINK VVS 2 65% 64% Thick to Very Thick (Faceted) Pointed EXCELLENT EXCELLENT SLIGHT IGI LG780680514 Comments: This Laboratory Grown Diamond was created by Chemical Vapor Deposition (CVD) growth process. Indications of post-growth treatment.