



ELECTRONIC COPY

LG780680354
Report verification at igi.org



May 18, 2026
IGI Report Number **LG780680354**
Description **LABORATORY GROWN DIAMOND**
Shape and Cutting Style **CUSHION MODIFIED BRILLIANT**
Measurements **7.91 X 5.38 X 3.42 MM**
GRADING RESULTS
Carat Weight **1.33 CARAT**
Color Grade **FANCY INTENSE BLUE GREEN**
Clarity Grade **VS 2**

May 18, 2026
IGI Report Number **LG780680354**
Description **LABORATORY GROWN DIAMOND**
Shape and Cutting Style **CUSHION MODIFIED BRILLIANT**
Measurements **7.91 X 5.38 X 3.42 MM**

GRADING RESULTS

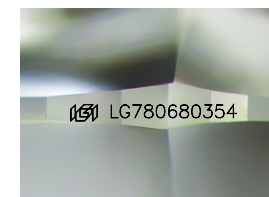
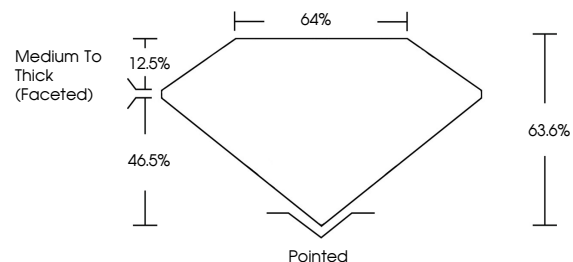
Carat Weight **1.33 CARAT**
Color Grade **FANCY INTENSE BLUE GREEN**
Clarity Grade **VS 2**

ADDITIONAL GRADING INFORMATION

Polish **VERY GOOD**
Symmetry **VERY GOOD**
Fluorescence **NONE**
Inscription(s) **IGI LG780680354**

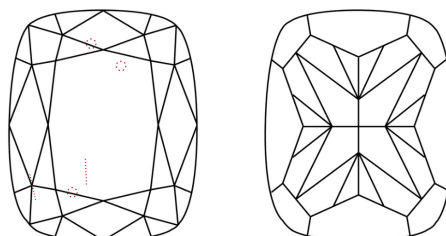
Comments: This Laboratory Grown Diamond was created by Chemical Vapor Deposition (CVD) growth process.
Indications of post-growth treatment.

PROPORTIONS



Sample Image Used

CLARITY CHARACTERISTICS



KEY TO SYMBOLS

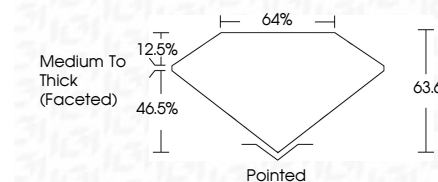
Red symbols indicate internal characteristics.
Green symbols indicate external characteristics.

COLOR

D E F G H I J Faint Very Light Light

CLARITY

FL	IF	VS ¹⁻²	VS ¹⁻²	SI ¹⁻²	I ¹⁻³
Flawless	Internally Flawless	Very Very Slightly Included	Very Slightly Included	Slightly Included	Included



ADDITIONAL GRADING INFORMATION

Polish **VERY GOOD**
Symmetry **VERY GOOD**
Fluorescence **NONE**
Inscription(s) **IGI LG780680354**
Comments: This Laboratory Grown Diamond was created by Chemical Vapor Deposition (CVD) growth process.
Indications of post-growth treatment.



May 18, 2026
IGI Report No LG780680354
CUSHION MODIFIED BRILLIANT
1.33 CARAT
Carat Weight
Color Grade FANCY INTENSE BLUE GREEN
Clarity Grade VS 2
Depth 63.6%
Table 46.5%
Girdle Medium To Thick (Faceted)
Culet Pointed
Polish VERY GOOD
Symmetry VERY GOOD
Fluorescence NONE
Inscription(s) IGI LG780680354
Comments: This Laboratory Grown Diamond was created by Chemical Vapor Deposition (CVD) growth process.
Indications of post-growth treatment.