



**ELECTRONIC COPY**

LG780680345  
Report verification at igi.org



May 18, 2026

IGI Report Number **LG780680345**

Description **LABORATORY GROWN DIAMOND**

Shape and Cutting Style **PEAR MODIFIED BRILLIANT**

Measurements **8.86 X 5.71 X 3.63 MM**

**GRADING RESULTS**

Carat Weight **1.22 CARAT**

Color Grade **FANCY VIVID BLUE**

Clarity Grade **VVS 2**

May 18, 2026

IGI Report Number **LG780680345**

Description **LABORATORY GROWN DIAMOND**

Shape and Cutting Style **PEAR MODIFIED BRILLIANT**

Measurements **8.86 X 5.71 X 3.63 MM**

**GRADING RESULTS**

Carat Weight **1.22 CARAT**

Color Grade **FANCY VIVID BLUE**

Clarity Grade **VVS 2**

**ADDITIONAL GRADING INFORMATION**

Polish **VERY GOOD**

Symmetry **GOOD**

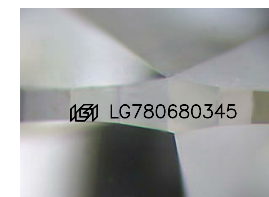
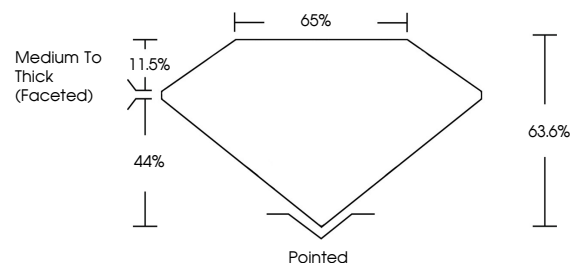
Fluorescence **NONE**

Inscription(s) **IGI LG780680345**

Comments: This Laboratory Grown Diamond was created by Chemical Vapor Deposition (CVD) growth process.

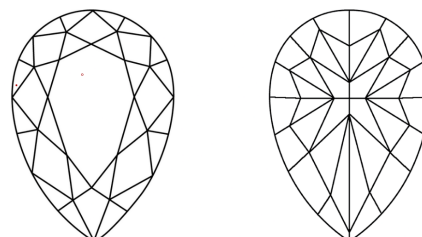
Indications of post-growth treatment.

**PROPORTIONS**



Sample Image Used

**CLARITY CHARACTERISTICS**



**KEY TO SYMBOLS**

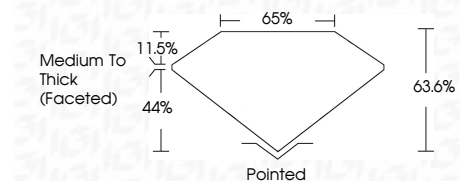
Red symbols indicate internal characteristics.  
Green symbols indicate external characteristics.

**COLOR**

D E F G H I J Faint Very Light Light

**CLARITY**

FL	IF	VVS <sup>1-2</sup>	VS <sup>1-2</sup>	SI <sup>1-2</sup>	I <sup>1-3</sup>
Flawless	Internally Flawless	Very Very Slightly Included	Very Slightly Included	Slightly Included	Included



**ADDITIONAL GRADING INFORMATION**

Polish **VERY GOOD**

Symmetry **GOOD**

Fluorescence **NONE**

Inscription(s) **IGI LG780680345**

Comments: This Laboratory Grown Diamond was created by Chemical Vapor Deposition (CVD) growth process. Indications of post-growth treatment.



May 18, 2026  
IGI Report No LG780680345  
**PEAR MODIFIED BRILLIANT**  
8.86 X 5.71 X 3.63 MM  
1.22 CARAT  
FANCY VIVID BLUE  
VVS 2  
63.6%  
65%  
Medium To Thick (Faceted)  
Pointed  
VERY GOOD  
GOOD  
NONE  
IGI LG780680345

Comments: This Laboratory Grown Diamond was created by Chemical Vapor Deposition (CVD) growth process. Indications of post-growth treatment.