



**ELECTRONIC COPY**

LG780679819  
Report verification at igi.org



May 15, 2026

IGI Report Number **LG780679819**

Description **LABORATORY GROWN DIAMOND**

Shape and Cutting Style **CUSHION MIXED CUT**

Measurements **6.75 X 4.74 X 3.24 MM**

**GRADING RESULTS**

Carat Weight **1.02 CARAT**

Color Grade **FANCY INTENSE YELLOW**

Clarity Grade **VVS 2**

May 15, 2026

IGI Report Number **LG780679819**

Description **LABORATORY GROWN DIAMOND**

Shape and Cutting Style **CUSHION MIXED CUT**

Measurements **6.75 X 4.74 X 3.24 MM**

**GRADING RESULTS**

Carat Weight **1.02 CARAT**

Color Grade **FANCY INTENSE YELLOW**

Clarity Grade **VVS 2**

**ADDITIONAL GRADING INFORMATION**

Polish **EXCELLENT**

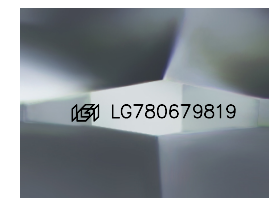
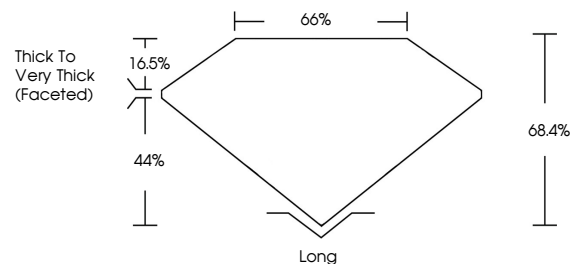
Symmetry **EXCELLENT**

Fluorescence **NONE**

Inscription(s) **IGI LG780679819**

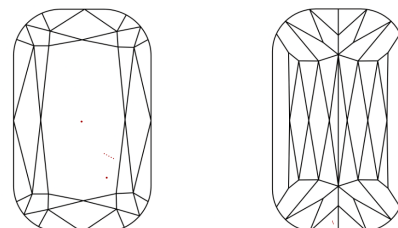
Comments: This Laboratory Grown Diamond was created by Chemical Vapor Deposition (CVD) growth process.

**PROPORTIONS**



Sample Image Used

**CLARITY CHARACTERISTICS**



**KEY TO SYMBOLS**

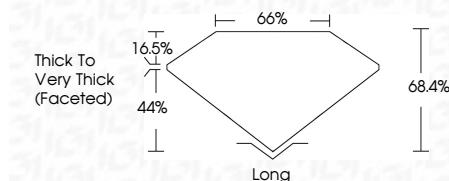
Red symbols indicate internal characteristics.  
Green symbols indicate external characteristics.

**COLOR**

D E F G H I J Faint Very Light Light

**CLARITY**

FL	IF	VVS <sup>1-2</sup>	VS <sup>1-2</sup>	SI <sup>1-2</sup>	I <sup>1-3</sup>
Flawless	Internally Flawless	Very Very Slightly Included	Very Slightly Included	Slightly Included	Included



**ADDITIONAL GRADING INFORMATION**

Polish **EXCELLENT**

Symmetry **EXCELLENT**

Fluorescence **NONE**

Inscription(s) **IGI LG780679819**

Comments: This Laboratory Grown Diamond was created by Chemical Vapor Deposition (CVD) growth process.



May 15, 2026  
IGI Report No LG780679819  
CUSHION MIXED CUT

1.02 CARAT  
Carat Weight  
FANCY INTENSE YELLOW  
Color Grade

VVS 2  
Clarity Grade

6.75 X 4.74 X 3.24 MM  
68.4%  
44%  
Depth  
Table  
Girdle  
Thick to Very Thick (Faceted)

Long  
Culet  
EXCELLENT  
Polish  
EXCELLENT  
Symmetry  
NONE  
Fluorescence  
IGI LG780679819  
Inscription(s)

Comments: This Laboratory Grown Diamond was created by Chemical Vapor Deposition (CVD) growth process.