



ELECTRONIC COPY

LG780679573
Report verification at igi.org



May 9, 2026
IGI Report Number **LG780679573**
Description **LABORATORY GROWN DIAMOND**
Shape and Cutting Style **CUSHION MODIFIED BRILLIANT**
Measurements **6.14 X 5.51 X 3.56 MM**
GRADING RESULTS
Carat Weight **1.12 CARAT**
Color Grade **FANCY LIGHT BLUE**
Clarity Grade **VS 1**

May 9, 2026
IGI Report Number **LG780679573**
Description **LABORATORY GROWN DIAMOND**
Shape and Cutting Style **CUSHION MODIFIED BRILLIANT**
Measurements **6.14 X 5.51 X 3.56 MM**

GRADING RESULTS

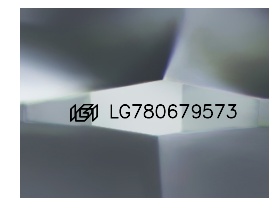
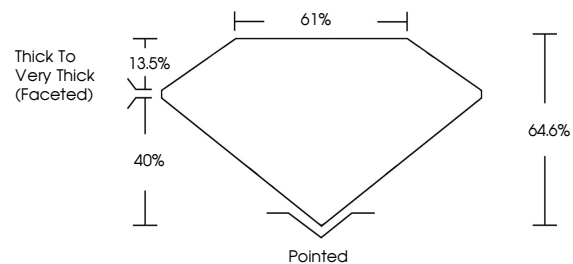
Carat Weight **1.12 CARAT**
Color Grade **FANCY LIGHT BLUE**
Clarity Grade **VS 1**

ADDITIONAL GRADING INFORMATION

Polish **VERY GOOD**
Symmetry **VERY GOOD**
Fluorescence **NONE**
Inscription(s) **IGI LG780679573**

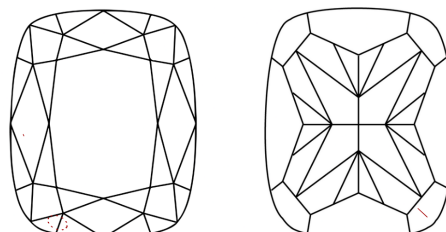
Comments: As Grown - No indication of post-growth treatment.
This Laboratory Grown Diamond was created by High Pressure High Temperature (HPHT) growth process.

PROPORTIONS



Sample Image Used

CLARITY CHARACTERISTICS



KEY TO SYMBOLS

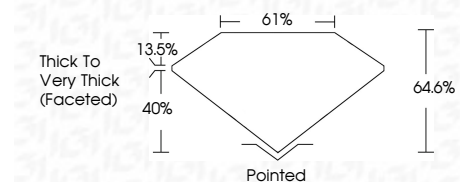
Red symbols indicate internal characteristics.
Green symbols indicate external characteristics.

COLOR

D E F G H I J Faint Very Light Light

CLARITY

FL	IF	VS ¹⁻²	VS ¹⁻²	SI ¹⁻²	I ¹⁻³
Flawless	Internally Flawless	Very Very Slightly Included	Very Slightly Included	Slightly Included	Included



ADDITIONAL GRADING INFORMATION

Polish **VERY GOOD**
Symmetry **VERY GOOD**
Fluorescence **NONE**
Inscription(s) **IGI LG780679573**
Comments: As Grown - No indication of post-growth treatment.
This Laboratory Grown Diamond was created by High Pressure High Temperature (HPHT) growth process.



IGI

May 9, 2026
IGI Report No LG780679573
CUSHION MODIFIED BRILLIANT
6.14 X 5.51 X 3.56 MM
1.12 CARAT
FANCY LIGHT BLUE
VS 1
64.6%
40%
61%
Thick to Very Thick (Faceted)
Pointed
Polish **VERY GOOD**
Symmetry **VERY GOOD**
Fluorescence **NONE**
Inscription(s) **IGI LG780679573**

Comments: As Grown - No indication of post-growth treatment.
This Laboratory Grown Diamond was created by High Pressure High Temperature (HPHT) growth process.