



ELECTRONIC COPY

LG780679571
Report verification at igi.org



May 9, 2026
IGI Report Number **LG780679571**
Description **LABORATORY GROWN DIAMOND**
Shape and Cutting Style **CUSHION MODIFIED BRILLIANT**
Measurements **5.93 X 5.25 X 3.57 MM**
GRADING RESULTS
Carat Weight **1.02 CARAT**
Color Grade **FANCY BLUE**
Clarity Grade **VVS 2**

LABORATORY GROWN DIAMOND REPORT

May 9, 2026
IGI Report Number **LG780679571**
Description **LABORATORY GROWN DIAMOND**
Shape and Cutting Style **CUSHION MODIFIED BRILLIANT**
Measurements **5.93 X 5.25 X 3.57 MM**

GRADING RESULTS

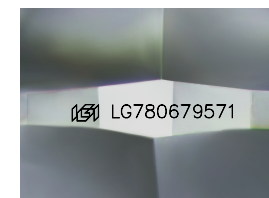
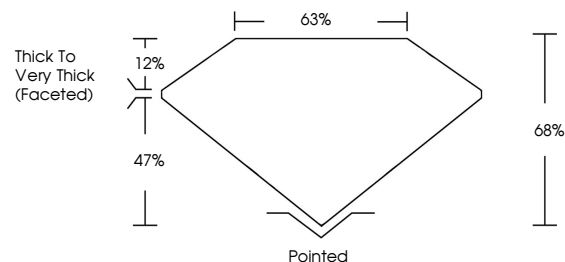
Carat Weight **1.02 CARAT**
Color Grade **FANCY BLUE**
Clarity Grade **VVS 2**

ADDITIONAL GRADING INFORMATION

Polish **VERY GOOD**
Symmetry **VERY GOOD**
Fluorescence **NONE**
Inscription(s) **IGI LG780679571**

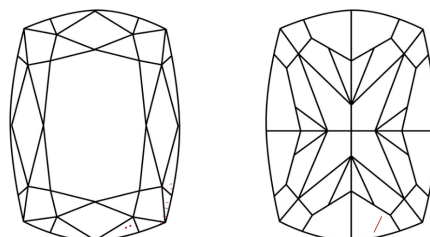
Comments: As Grown - No indication of post-growth treatment.
This Laboratory Grown Diamond was created by High Pressure High Temperature (HPHT) growth process.

PROPORTIONS



Sample Image Used

CLARITY CHARACTERISTICS



KEY TO SYMBOLS

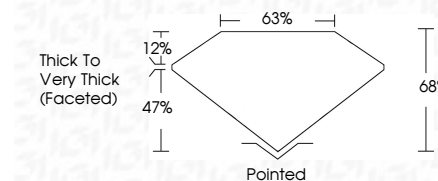
Red symbols indicate internal characteristics.
Green symbols indicate external characteristics.

COLOR

D E F G H I J Faint Very Light Light

CLARITY

FL	IF	VVS ¹⁻²	VS ¹⁻²	SI ¹⁻²	I ¹⁻³
Flawless	Internally Flawless	Very Very Slightly Included	Very Slightly Included	Slightly Included	Included



ADDITIONAL GRADING INFORMATION

Polish **VERY GOOD**
Symmetry **VERY GOOD**
Fluorescence **NONE**
Inscription(s) **IGI LG780679571**
Comments: As Grown - No indication of post-growth treatment.
This Laboratory Grown Diamond was created by High Pressure High Temperature (HPHT) growth process.



May 9, 2026
IGI Report No **LG780679571**
CUSHION MODIFIED BRILLIANT
5.93 X 5.25 X 3.57 MM
1.02 CARAT
FANCY BLUE
VVS 2
68%
68%
Thick to Very Thick (Faceted)
Pointed
Polish **VERY GOOD**
Symmetry **VERY GOOD**
Fluorescence **NONE**
Inscription(s) **IGI LG780679571**
Comments: As Grown - No indication of post-growth treatment.
This Laboratory Grown Diamond was created by High Pressure High Temperature (HPHT) growth process.