



ELECTRONIC COPY

LG780679566
Report verification at igi.org



May 9, 2026
IGI Report Number **LG780679566**
Description **LABORATORY GROWN DIAMOND**
Shape and Cutting Style **SQUARE CUSHION MODIFIED BRILLIANT**
Measurements **6.05 X 5.74 X 3.25 MM**
GRADING RESULTS
Carat Weight **1.02 CARAT**
Color Grade **FANCY BLUE**
Clarity Grade **VS 1**

LABORATORY GROWN DIAMOND REPORT

May 9, 2026
IGI Report Number **LG780679566**
Description **LABORATORY GROWN DIAMOND**
Shape and Cutting Style **SQUARE CUSHION MODIFIED BRILLIANT**
Measurements **6.05 X 5.74 X 3.25 MM**

GRADING RESULTS

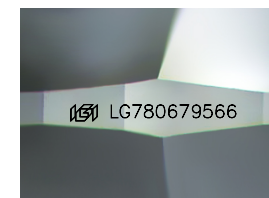
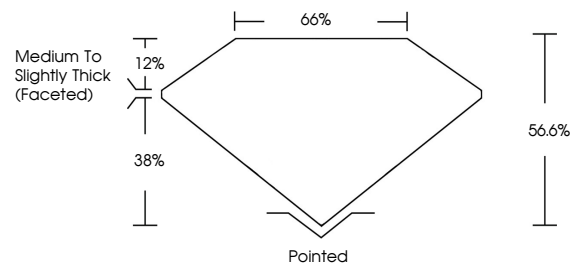
Carat Weight **1.02 CARAT**
Color Grade **FANCY BLUE**
Clarity Grade **VS 1**

ADDITIONAL GRADING INFORMATION

Polish **VERY GOOD**
Symmetry **VERY GOOD**
Fluorescence **NONE**
Inscription(s) **LG780679566**

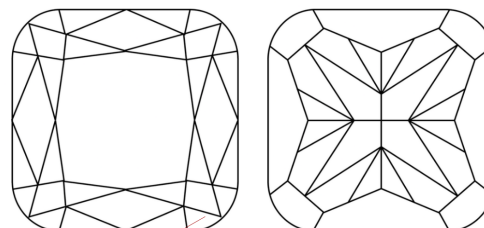
Comments: As Grown - No indication of post-growth treatment.
This Laboratory Grown Diamond was created by High Pressure High Temperature (HPHT) growth process.

PROPORTIONS



Sample Image Used

CLARITY CHARACTERISTICS



KEY TO SYMBOLS

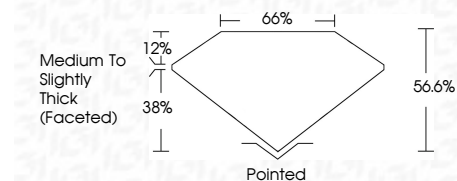
Red symbols indicate internal characteristics.
Green symbols indicate external characteristics.

COLOR

D E F G H I J Faint Very Light Light

CLARITY

FL	IF	VS ¹⁻²	VS ¹⁻²	SI ¹⁻²	I ¹⁻³
Flawless	Internally Flawless	Very Very Slightly Included	Very Slightly Included	Slightly Included	Included



ADDITIONAL GRADING INFORMATION

Polish **VERY GOOD**
Symmetry **VERY GOOD**
Fluorescence **NONE**
Inscription(s) **LG780679566**
Comments: As Grown - No indication of post-growth treatment.
This Laboratory Grown Diamond was created by High Pressure High Temperature (HPHT) growth process.



May 9, 2026
IGI Report No **LG780679566**
SQUARE CUSHION MODIFIED BRILLIANT
Carat Weight **1.02 CARAT**
Color Grade **FANCY BLUE**
Clarity Grade **VS 1**
Table **66%**
Depth **38%**
Girdle **Medium to Slightly Thick (Faceted)**
Culet **Pointed**
Polish **VERY GOOD**
Symmetry **VERY GOOD**
Fluorescence **NONE**
Inscription(s) **LG780679566**

Comments: As Grown - No indication of post-growth treatment.
This Laboratory Grown Diamond was created by High Pressure High Temperature (HPHT) growth process.