



**ELECTRONIC COPY**

LG780679466  
Report verification at igi.org



May 20, 2026

IGI Report Number **LG780679466**

Description **LABORATORY GROWN DIAMOND**

Shape and Cutting Style **ROUND BRILLIANT**

Measurements **6.48 - 6.53 X 3.80 MM**

**GRADING RESULTS**

Carat Weight **1.03 CARAT**

Color Grade **FANCY VIVID PINK**

Clarity Grade **VS 2**

Cut Grade **GOOD**

May 20, 2026

IGI Report Number **LG780679466**

Description **LABORATORY GROWN DIAMOND**

Shape and Cutting Style **ROUND BRILLIANT**

Measurements **6.48 - 6.53 X 3.80 MM**

**GRADING RESULTS**

Carat Weight **1.03 CARAT**

Color Grade **FANCY VIVID PINK**

Clarity Grade **VS 2**

Cut Grade **GOOD**

**ADDITIONAL GRADING INFORMATION**

Polish **EXCELLENT**

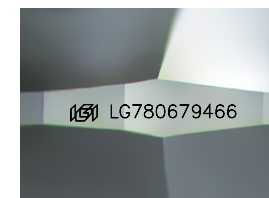
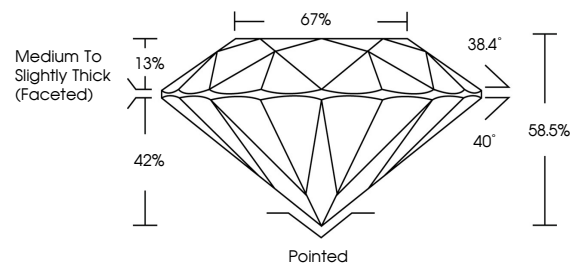
Symmetry **GOOD**

Fluorescence **SLIGHT**

Inscription(s) **IGI LG780679466**

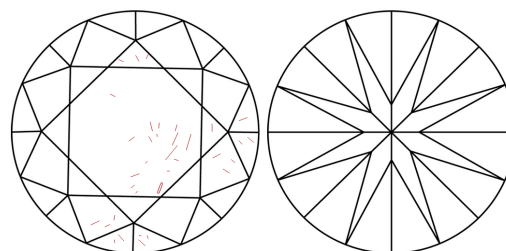
Comments: This Laboratory Grown Diamond was created by High Pressure High Temperature (HPHT) growth process. Indications of post-growth treatment.

**PROPORTIONS**



Sample Image Used

**CLARITY CHARACTERISTICS**



**KEY TO SYMBOLS**

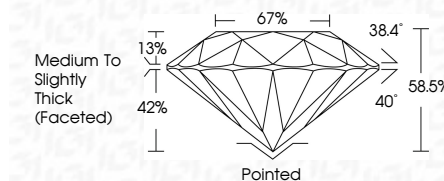
Red symbols indicate internal characteristics.  
Green symbols indicate external characteristics.

**COLOR**

D E F G H I J Faint Very Light Light

**CLARITY**

FL	IF	VS <sup>1-2</sup>	VS <sup>1-2</sup>	SI <sup>1-2</sup>	I <sup>1-3</sup>
Flawless	Internally Flawless	Very Very Slightly Included	Very Slightly Included	Slightly Included	Included



**ADDITIONAL GRADING INFORMATION**

Polish **EXCELLENT**

Symmetry **GOOD**

Fluorescence **SLIGHT**

Inscription(s) **IGI LG780679466**

Comments: This Laboratory Grown Diamond was created by High Pressure High Temperature (HPHT) growth process. Indications of post-growth treatment.



May 20, 2026	IGI Report No LG780679466	1.03 CARAT	FANCY VIVID PINK	VS 2	GOOD	67%	Pointed	EXCELLENT	GOOD	SLIGHT	IGI LG780679466		
ROUND BRILLIANT	6.48 - 6.53 X 3.80 MM	Carat Weight	Color Grade	Clarity Grade	Cut Grade	Depth	Table	Grade	Culet	Polish	Symmetry	Fluorescence	Inscription(s)

Comments: This Laboratory Grown Diamond was created by High Pressure High Temperature (HPHT) growth process. Indications of post-growth treatment.