



ELECTRONIC COPY

LG780679171
Report verification at igi.org



April 30, 2026

IGI Report Number **LG780679171**

Description **LABORATORY GROWN DIAMOND**

Shape and Cutting Style **ROUND BRILLIANT**

Measurements **7.31 - 7.35 X 4.48 MM**

GRADING RESULTS

Carat Weight **1.50 CARAT**

Color Grade **FANCY VIVID GREEN**

Clarity Grade **VS 1**

Cut Grade **IDEAL**

April 30, 2026

IGI Report Number **LG780679171**

Description **LABORATORY GROWN DIAMOND**

Shape and Cutting Style **ROUND BRILLIANT**

Measurements **7.31 - 7.35 X 4.48 MM**

GRADING RESULTS

Carat Weight **1.50 CARAT**

Color Grade **FANCY VIVID GREEN**

Clarity Grade **VS 1**

Cut Grade **IDEAL**

ADDITIONAL GRADING INFORMATION

Polish **EXCELLENT**

Symmetry **EXCELLENT**

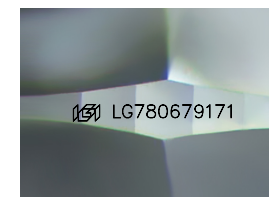
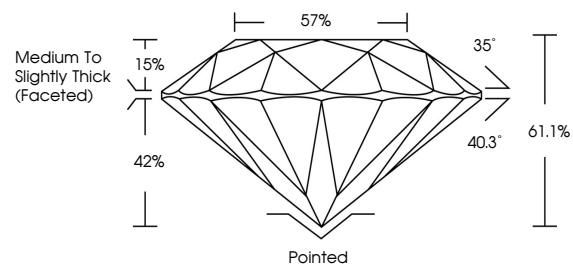
Fluorescence **NONE**

Inscription(s) **IGI LG780679171**

Comments: This Laboratory Grown Diamond was created by Chemical Vapor Deposition (CVD) growth process.

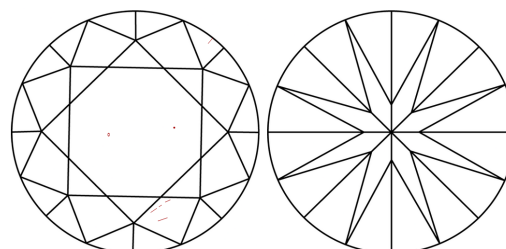
Indications of post-growth treatment.

PROPORTIONS



Sample Image Used

CLARITY CHARACTERISTICS



KEY TO SYMBOLS

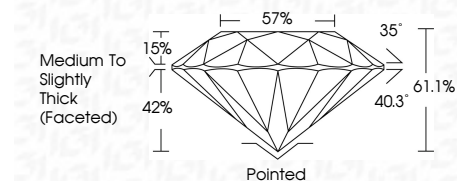
Red symbols indicate internal characteristics.
Green symbols indicate external characteristics.

COLOR

D E F G H I J Faint Very Light Light

CLARITY

FL	IF	VS ¹⁻²	VS ¹⁻²	SI ¹⁻²	I ¹⁻³
Flawless	Internally Flawless	Very Very Slightly Included	Very Slightly Included	Slightly Included	Included



ADDITIONAL GRADING INFORMATION

Polish **EXCELLENT**

Symmetry **EXCELLENT**

Fluorescence **NONE**

Inscription(s) **IGI LG780679171**

Comments: This Laboratory Grown Diamond was created by Chemical Vapor Deposition (CVD) growth process.

Indications of post-growth treatment.



IGI



April 30, 2026
IGI Report No LG780679171
ROUND BRILLIANT

1.50 CARAT
FANCY VIVID GREEN

VS 1
IDEAL

7.31 - 7.35 X 4.48 MM
61.1%
57%
Medium To Slightly Thick (Faceted)

Pointed
EXCELLENT
EXCELLENT
NONE
IGI LG780679171

Comments: This Laboratory Grown Diamond was created by Chemical Vapor Deposition (CVD) growth process. Indications of post-growth treatment.