



**ELECTRONIC COPY**

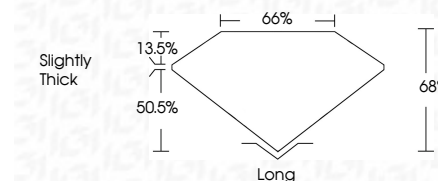
LG780678193  
Report verification at igi.org



May 13, 2026  
IGI Report Number **LG780678193**  
Description **LABORATORY GROWN DIAMOND**  
Shape and Cutting Style **EMERALD CUT**  
Measurements **9.97 X 6.74 X 4.58 MM**

**GRADING RESULTS**

Carat Weight **3.09 CARATS**  
Color Grade **F**  
Clarity Grade **VS 1**



**ADDITIONAL GRADING INFORMATION**

Polish **EXCELLENT**  
Symmetry **EXCELLENT**  
Fluorescence **NONE**  
Inscription(s) **IGI LG780678193**  
Comments: This Laboratory Grown Diamond was created by Chemical Vapor Deposition (CVD) growth process. Type IIa



May 13, 2026  
IGI Report No LG780678193  
**EMERALD CUT**  
3.09 CARATS  
F  
9.97 X 6.74 X 4.58 MM  
Color Grade  
VS 1  
68%  
50.5%  
Slightly Thick  
Long  
EXCELLENT  
EXCELLENT  
NONE  
IGI LG780678193  
Comments: This Laboratory Grown Diamond was created by Chemical Vapor Deposition (CVD) growth process. Type IIa

**LABORATORY GROWN DIAMOND REPORT**

May 13, 2026  
IGI Report Number **LG780678193**  
Description **LABORATORY GROWN DIAMOND**  
Shape and Cutting Style **EMERALD CUT**  
Measurements **9.97 X 6.74 X 4.58 MM**

**GRADING RESULTS**

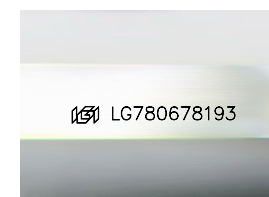
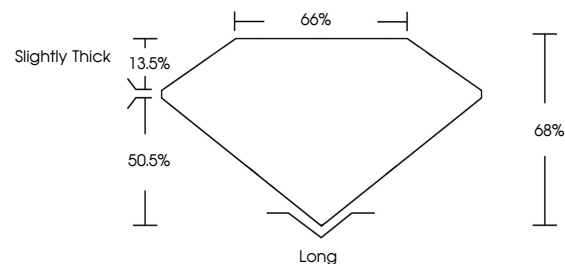
Carat Weight **3.09 CARATS**  
Color Grade **F**  
Clarity Grade **VS 1**

**ADDITIONAL GRADING INFORMATION**

Polish **EXCELLENT**  
Symmetry **EXCELLENT**  
Fluorescence **NONE**  
Inscription(s) **IGI LG780678193**

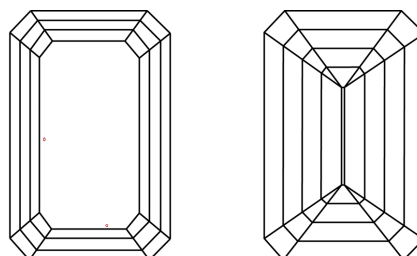
Comments: This Laboratory Grown Diamond was created by Chemical Vapor Deposition (CVD) growth process. Type IIa

**PROPORTIONS**



Sample Image Used

**CLARITY CHARACTERISTICS**



**KEY TO SYMBOLS**

Red symbols indicate internal characteristics.  
Green symbols indicate external characteristics.

**COLOR**

D E F G H I J Faint Very Light Light

**CLARITY**

FL	IF	VS <sup>1-2</sup>	VS <sup>1-2</sup>	SI <sup>1-2</sup>	I <sup>1-3</sup>
Flawless	Internally Flawless	Very Very Slightly Included	Very Slightly Included	Slightly Included	Included

