



ELECTRONIC COPY

LG780678127
Report verification at igi.org



May 12, 2026
IGI Report Number **LG780678127**
Description **LABORATORY GROWN DIAMOND**
Shape and Cutting Style **SQUARE CUSHION MODIFIED BRILLIANT**
Measurements **8.13 X 8.03 X 5.09 MM**
GRADING RESULTS
Carat Weight **3.10 CARATS**
Color Grade **FANCY VIVID BROWNISH PINK**
Clarity Grade **SI 1**

LABORATORY GROWN DIAMOND REPORT

May 12, 2026
IGI Report Number **LG780678127**
Description **LABORATORY GROWN DIAMOND**
Shape and Cutting Style **SQUARE CUSHION MODIFIED BRILLIANT**
Measurements **8.13 X 8.03 X 5.09 MM**

GRADING RESULTS

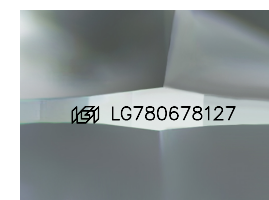
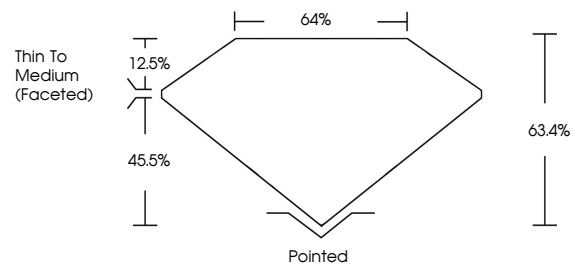
Carat Weight **3.10 CARATS**
Color Grade **FANCY VIVID BROWNISH PINK**
Clarity Grade **SI 1**

ADDITIONAL GRADING INFORMATION

Polish **EXCELLENT**
Symmetry **VERY GOOD**
Fluorescence **SLIGHT**
Inscription(s) **IGI LG780678127**

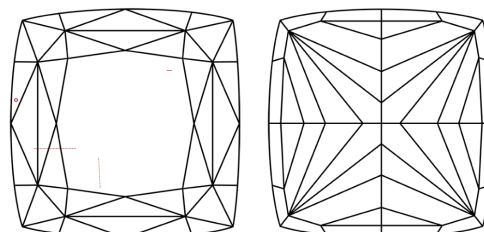
Comments: This Laboratory Grown Diamond was created by Chemical Vapor Deposition (CVD) growth process.
Indications of post-growth treatment.

PROPORTIONS



Sample Image Used

CLARITY CHARACTERISTICS



KEY TO SYMBOLS

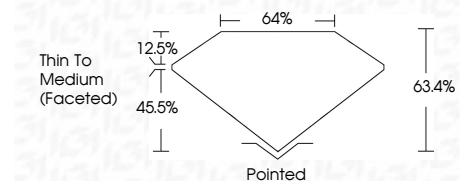
Red symbols indicate internal characteristics.
Green symbols indicate external characteristics.

COLOR

D E F G H I J Faint Very Light Light

CLARITY

FL	IF	VS ¹⁻²	VS ¹⁻²	SI ¹⁻²	I ¹⁻³
Flawless	Internally Flawless	Very Very Slightly Included	Very Slightly Included	Slightly Included	Included



ADDITIONAL GRADING INFORMATION

Polish **EXCELLENT**
Symmetry **VERY GOOD**
Fluorescence **SLIGHT**
Inscription(s) **IGI LG780678127**
Comments: This Laboratory Grown Diamond was created by Chemical Vapor Deposition (CVD) growth process.
Indications of post-growth treatment.



May 12, 2026
IGI Report No **LG780678127**
SQUARE CUSHION MODIFIED BRILLIANT
3.10 CARATS
Carat Weight
FANCY VIVID BROWNISH PINK
Color Grade
SI 1
Clarity Grade
8.13 X 8.03 X 5.09 MM
Depth
63.4%
Table
64%
Crown
12.5%
Pavilion
45.5%
Pointed
EXCELLENT
Culet
VERY GOOD
Polish
SLIGHT
Symmetry
EXCELLENT
Fluorescence
IGI LG780678127
Inscription(s)

Comments: This Laboratory Grown Diamond was created by Chemical Vapor Deposition (CVD) growth process.
Indications of post-growth treatment.