



**ELECTRONIC COPY**

LG780674890  
Report verification at igi.org



March 12, 2026

IGI Report Number **LG780674890**

Description **LABORATORY GROWN DIAMOND**

Shape and Cutting Style **ROUND BRILLIANT**

Measurements **12.28 - 12.35 X 7.43 MM**

**GRADING RESULTS**

Carat Weight **7.01 CARATS**

Color Grade **E**

Clarity Grade **SI 1**

Cut Grade **EXCELLENT**

March 12, 2026  
IGI Report Number **LG780674890**  
Description **LABORATORY GROWN DIAMOND**  
Shape and Cutting Style **ROUND BRILLIANT**  
Measurements **12.28 - 12.35 X 7.43 MM**

**GRADING RESULTS**

Carat Weight **7.01 CARATS**

Color Grade **E**

Clarity Grade **SI 1**

Cut Grade **EXCELLENT**

**ADDITIONAL GRADING INFORMATION**

Polish **EXCELLENT**

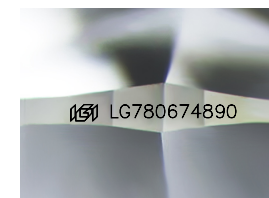
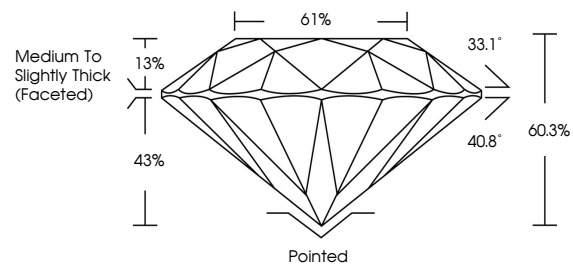
Symmetry **EXCELLENT**

Fluorescence **NONE**

Inscription(s) **IGI LG780674890**

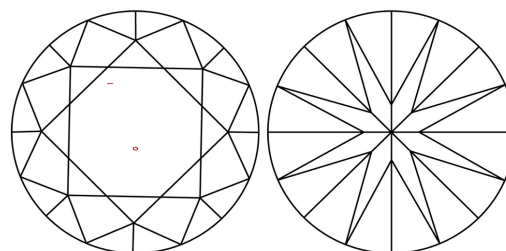
Comments: This Laboratory Grown Diamond was created by Chemical Vapor Deposition (CVD) growth process. Type IIa

**PROPORTIONS**



Sample Image Used

**CLARITY CHARACTERISTICS**



**KEY TO SYMBOLS**

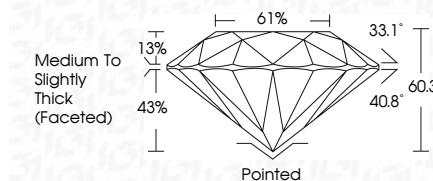
Red symbols indicate internal characteristics.  
Green symbols indicate external characteristics.

**COLOR**

D E F G H I J Faint Very Light Light

**CLARITY**

FL	IF	VS <sup>1-2</sup>	VS <sup>1-2</sup>	SI <sup>1-2</sup>	I <sup>1-3</sup>
Flawless	Internally Flawless	Very Very Slightly Included	Very Slightly Included	Slightly Included	Included



**ADDITIONAL GRADING INFORMATION**

Polish **EXCELLENT**

Symmetry **EXCELLENT**

Fluorescence **NONE**

Inscription(s) **IGI LG780674890**

Comments: This Laboratory Grown Diamond was created by Chemical Vapor Deposition (CVD) growth process. Type IIa



**IGI**



March 12, 2026	IGI Report No LG780674890	ROUND BRILLIANT	12.28 - 12.35 X 7.43 MM	7.01 CARATS	E	SI 1	EXCELLENT	60.3%	61%	Medium To Slightly Thick (Faceted)	Pointed	EXCELLENT	EXCELLENT	NONE	IGI LG780674890

Comments: This Laboratory Grown Diamond was created by Chemical Vapor Deposition (CVD) growth process. Type IIa