



March 6, 2026

**IGI Report Number** LG780674112  
**ROUND BRILLIANT**  
**LABORATORY GROWN DIAMOND**  
**5.45 - 5.57 X 3.34 MM**

**0.61 CARAT**  
**D**  
**VVS 2**  
**IDEAL**  
**EXCELLENT**  
**EXCELLENT**  
**NONE**  
**Inscription(s)** IGI LG780674112

Comments: This Laboratory Grown Diamond was created by Chemical Vapor Deposition (CVD) growth process. Type IIa

**LABORATORY GROWN DIAMOND REPORT**

March 6, 2026  
IGI Report Number **LG780674112**  
Description **LABORATORY GROWN DIAMOND**  
Shape and Cutting Style **ROUND BRILLIANT**  
Measurements **5.45 - 5.57 X 3.34 MM**

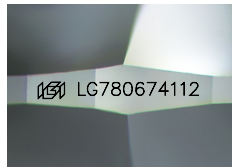
**GRADING RESULTS**

Carat Weight **0.61 CARAT**  
Color Grade **D**  
Clarity Grade **VVS 2**  
Cut Grade **IDEAL**

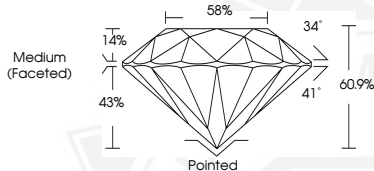
**ADDITIONAL GRADING INFORMATION**

Polish **EXCELLENT**  
Symmetry **EXCELLENT**  
Fluorescence **NONE**  
Inscription(s) **IGI LG780674112**

Comments: This Laboratory Grown Diamond was created by Chemical Vapor Deposition (CVD) growth process.  
Type IIa



Sample Image Used



March 6, 2026

**IGI Report Number** LG780674112  
**ROUND BRILLIANT**  
**LABORATORY GROWN DIAMOND**  
**5.45 - 5.57 X 3.34 MM**

**0.61 CARAT**  
**D**  
**VVS 2**  
**IDEAL**  
**EXCELLENT**  
**EXCELLENT**  
**NONE**  
**Inscription(s)** IGI LG780674112

Comments: This Laboratory Grown Diamond was created by Chemical Vapor Deposition (CVD) growth process. Type IIa



THIS DOCUMENT WAS PRODUCED WITH THE FOLLOWING SECURITY MEASURES: SPECIAL DOCUMENT PAPER, INK SCREENS, WATERMARK, BACKGROUND DESIGNS, HOLOGRAM AND OTHER SECURITY FEATURES NOT LISTED AND DO EXCEED DOCUMENT SECURITY INDUSTRY GUIDELINES.