



# INTERNATIONAL GEMOLOGICAL INSTITUTE

ELECTRONIC COPY



March 6, 2026

IGI Report Number LG780674040

ROUND BRILLIANT  
LABORATORY GROWN DIAMOND  
6.17 - 6.22 X 3.74 MM

Carat Weight 0.87 CARAT  
Color Grade D  
Clarity Grade VVS 2  
Cut Grade IDEAL  
Polish EXCELLENT  
Symmetry EXCELLENT  
Fluorescence NONE  
Inscription(s) IGI LG780674040

Comments: This Laboratory Grown Diamond was created by Chemical Vapor Deposition (CVD) growth process. Type IIa

## LABORATORY GROWN DIAMOND REPORT

March 6, 2026

IGI Report Number

LG780674040

Description

LABORATORY GROWN DIAMOND

Shape and Cutting Style

ROUND BRILLIANT

Measurements

6.17 - 6.22 X 3.74 MM

### GRADING RESULTS

Carat Weight

0.87 CARAT

Color Grade

D

Clarity Grade

VVS 2

Cut Grade

IDEAL

### ADDITIONAL GRADING INFORMATION

Polish

EXCELLENT

Symmetry

EXCELLENT

Fluorescence

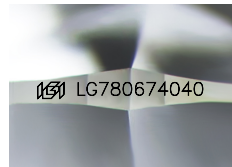
NONE

Inscription(s)

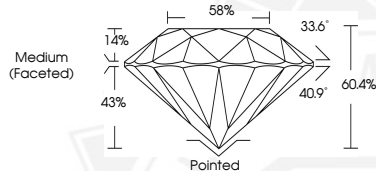
IGI LG780674040

Comments: This Laboratory Grown Diamond was created by Chemical Vapor Deposition (CVD) growth process.

Type IIa



Sample Image Used



March 6, 2026

IGI Report Number LG780674040

ROUND BRILLIANT  
LABORATORY GROWN DIAMOND  
6.17 - 6.22 X 3.74 MM

Carat Weight 0.87 CARAT  
Color Grade D  
Clarity Grade VVS 2  
Cut Grade IDEAL  
Polish EXCELLENT  
Symmetry EXCELLENT  
Fluorescence NONE  
Inscription(s) IGI LG780674040

Comments: This Laboratory Grown Diamond was created by Chemical Vapor Deposition (CVD) growth process. Type IIa



THIS DOCUMENT WAS PRODUCED WITH THE FOLLOWING SECURITY MEASURES: SPECIAL DOCUMENT PAPER, INK SCREENS, WATERMARK, BACKGROUND DESIGNS, HOLOGRAM AND OTHER SECURITY FEATURES NOT LISTED AND DO EXCEED DOCUMENT SECURITY INDUSTRY GUIDELINES.

For terms & conditions and to verify this report, please visit [www.igi.org](http://www.igi.org)