



**INTERNATIONAL  
GEMOLOGICAL  
INSTITUTE**

**ELECTRONIC COPY**



March 7, 2026

IGI Report Number **LG780673087**

**ROUND BRILLIANT  
LABORATORY GROWN DIAMOND  
6.36 - 6.41 X 3.94 MM**

|                |                        |
|----------------|------------------------|
| Carat Weight   | <b>0.98 CARAT</b>      |
| Color Grade    | <b>D</b>               |
| Clarity Grade  | <b>VVS 2</b>           |
| Cut Grade      | <b>IDEAL</b>           |
| Polish         | <b>EXCELLENT</b>       |
| Symmetry       | <b>EXCELLENT</b>       |
| Fluorescence   | <b>NONE</b>            |
| Inscription(s) | <b>IGI LG780673087</b> |

Comments: This Laboratory Grown Diamond was created by Chemical Vapor Deposition (CVD) growth process. Type IIa

**LABORATORY GROWN DIAMOND REPORT**

March 7, 2026

IGI Report Number

**LG780673087**

Description

**LABORATORY GROWN DIAMOND**

Shape and Cutting Style

**ROUND BRILLIANT**

Measurements

**6.36 - 6.41 X 3.94 MM**

**GRADING RESULTS**

Carat Weight

**0.98 CARAT**

Color Grade

**D**

Clarity Grade

**VVS 2**

Cut Grade

**IDEAL**

**ADDITIONAL GRADING INFORMATION**

Polish

**EXCELLENT**

Symmetry

**EXCELLENT**

Fluorescence

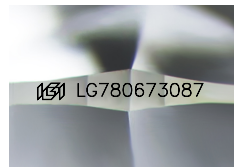
**NONE**

Inscription(s)

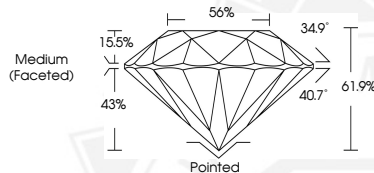
**IGI LG780673087**

Comments: This Laboratory Grown Diamond was created by Chemical Vapor Deposition (CVD) growth process.

Type IIa



Sample Image Used



March 7, 2026

IGI Report Number **LG780673087**

**ROUND BRILLIANT  
LABORATORY GROWN DIAMOND  
6.36 - 6.41 X 3.94 MM**

|                |                        |
|----------------|------------------------|
| Carat Weight   | <b>0.98 CARAT</b>      |
| Color Grade    | <b>D</b>               |
| Clarity Grade  | <b>VVS 2</b>           |
| Cut Grade      | <b>IDEAL</b>           |
| Polish         | <b>EXCELLENT</b>       |
| Symmetry       | <b>EXCELLENT</b>       |
| Fluorescence   | <b>NONE</b>            |
| Inscription(s) | <b>IGI LG780673087</b> |

Comments: This Laboratory Grown Diamond was created by Chemical Vapor Deposition (CVD) growth process. Type IIa



THIS DOCUMENT WAS PRODUCED WITH THE FOLLOWING SECURITY MEASURES: SPECIAL DOCUMENT PAPER, INK SCREENS, WATERMARK, BACKGROUND DESIGNS, HOLOGRAM AND OTHER SECURITY FEATURES NOT LISTED AND DO EXCEED DOCUMENT SECURITY INDUSTRY GUIDELINES.

For terms & conditions and to verify this report, please visit [www.igi.org](http://www.igi.org)