



ELECTRONIC COPY

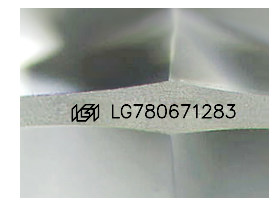
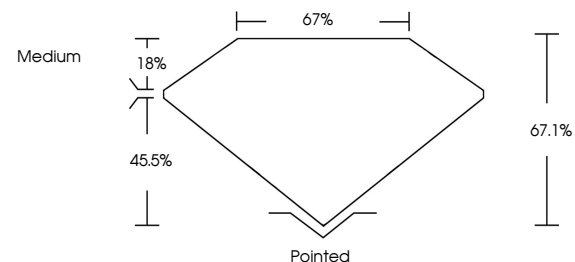
LG780671283
Report verification at igi.org



March 25, 2026
IGI Report Number **LG780671283**
Description **LABORATORY GROWN DIAMOND**
Shape and Cutting Style **SQUARE MIXED CUT**
Measurements **9.18 X 9.15 X 6.14 MM**
GRADING RESULTS
Carat Weight **5.02 CARATS**
Color Grade **FANCY VIVID BLUE**
Clarity Grade **VS 1**

March 25, 2026
IGI Report Number **LG780671283**
Description **LABORATORY GROWN DIAMOND**
Shape and Cutting Style **SQUARE MIXED CUT**
Measurements **9.18 X 9.15 X 6.14 MM**

PROPORTIONS

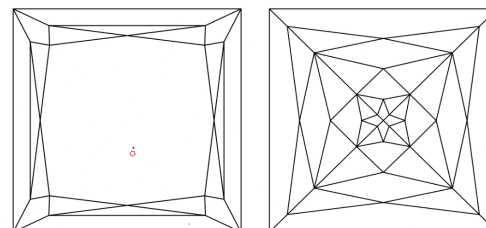


Sample Image Used

GRADING RESULTS

Carat Weight **5.02 CARATS**
Color Grade **FANCY VIVID BLUE**
Clarity Grade **VS 1**

CLARITY CHARACTERISTICS



KEY TO SYMBOLS

Red symbols indicate internal characteristics.
Green symbols indicate external characteristics.

ADDITIONAL GRADING INFORMATION

Polish **EXCELLENT**
Symmetry **EXCELLENT**
Fluorescence **NONE**
Inscription(s) **IGI LG780671283**

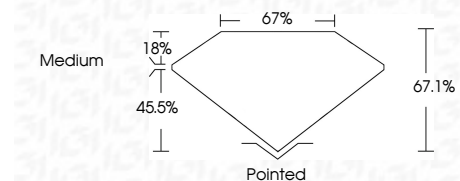
Comments: This Laboratory Grown Diamond was created by Chemical Vapor Deposition (CVD) growth process.
Indications of post-growth treatment.

COLOR

D E F G H I J Faint Very Light Light

CLARITY

FL	IF	VS ¹⁻²	VS ¹⁻²	SI ¹⁻²	I ¹⁻³
Flawless	Internally Flawless	Very Very Slightly Included	Very Slightly Included	Slightly Included	Included



ADDITIONAL GRADING INFORMATION

Polish **EXCELLENT**
Symmetry **EXCELLENT**
Fluorescence **NONE**
Inscription(s) **IGI LG780671283**
Comments: This Laboratory Grown Diamond was created by Chemical Vapor Deposition (CVD) growth process.
Indications of post-growth treatment.



IGI



March 25, 2026
IGI Report No **LG780671283**
SQUARE MIXED CUT
5.02 CARATS
Carat Weight **FANCY VIVID BLUE**
Color Grade **VS 1**
Clarity Grade **67.1%**
Depth **67%**
Table **Medium**
Girdle **Pointed**
Culet **EXCELLENT**
Polish **EXCELLENT**
Symmetry **EXCELLENT**
Fluorescence **NONE**
Inscription(s) **IGI LG780671283**

Comments: This Laboratory Grown Diamond was created by Chemical Vapor Deposition (CVD) growth process.
Indications of post-growth treatment.