



**ELECTRONIC COPY**

LG780671207  
Report verification at igi.org



March 6, 2026  
IGI Report Number **LG780671207**  
Description **LABORATORY GROWN DIAMOND**  
Shape and Cutting Style **CUSHION MODIFIED BRILLIANT**  
Measurements **10.48 X 8.08 X 5.61 MM**  
**GRADING RESULTS**  
Carat Weight **3.59 CARATS**  
Color Grade **E**  
Clarity Grade **VS 1**

March 6, 2026  
IGI Report Number **LG780671207**  
Description **LABORATORY GROWN DIAMOND**  
Shape and Cutting Style **CUSHION MODIFIED BRILLIANT**  
Measurements **10.48 X 8.08 X 5.61 MM**

**GRADING RESULTS**

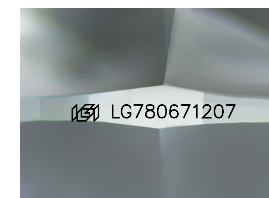
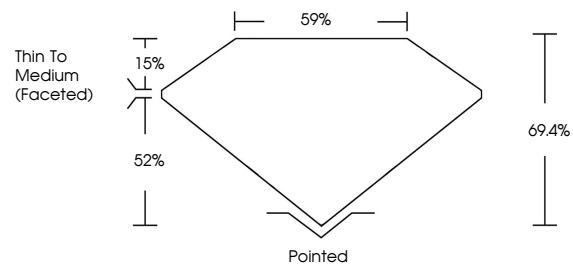
Carat Weight **3.59 CARATS**  
Color Grade **E**  
Clarity Grade **VS 1**

**ADDITIONAL GRADING INFORMATION**

Polish **EXCELLENT**  
Symmetry **EXCELLENT**  
Fluorescence **NONE**  
Inscription(s) **IGI LG780671207**

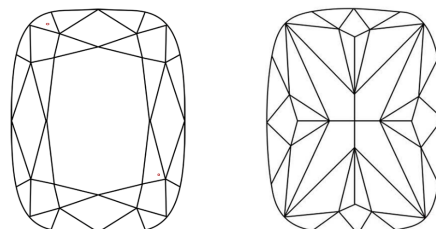
Comments: This Laboratory Grown Diamond was created by Chemical Vapor Deposition (CVD) growth process.  
Type IIa

**PROPORTIONS**



Sample Image Used

**CLARITY CHARACTERISTICS**



**KEY TO SYMBOLS**

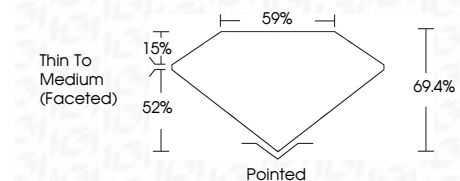
Red symbols indicate internal characteristics.  
Green symbols indicate external characteristics.

**COLOR**

D E F G H I J Faint Very Light Light

**CLARITY**

FL	IF	VS <sup>1-2</sup>	VS <sup>1-2</sup>	SI <sup>1-2</sup>	I <sup>1-3</sup>
Flawless	Internally Flawless	Very Very Slightly Included	Very Slightly Included	Slightly Included	Included



**ADDITIONAL GRADING INFORMATION**

Polish **EXCELLENT**  
Symmetry **EXCELLENT**  
Fluorescence **NONE**  
Inscription(s) **IGI LG780671207**  
Comments: This Laboratory Grown Diamond was created by Chemical Vapor Deposition (CVD) growth process.  
Type IIa



March 6, 2026  
IGI Report No **LG780671207**  
**CUSHION MODIFIED BRILLIANT**  
**10.48 X 8.08 X 5.61 MM**  
**3.59 CARATS**  
**E**  
**VS 1**  
**69.4%**  
**52%**  
Thin To Medium (Faceted)  
Pointed  
**EXCELLENT**  
**EXCELLENT**  
**NONE**  
**IGI LG780671207**  
Comments: This Laboratory Grown Diamond was created by Chemical Vapor Deposition (CVD) growth process.  
Type IIa