



March 6, 2026

IGI Report Number **LG780671060**

**HEART BRILLIANT**

**LABORATORY GROWN DIAMOND**

**5.86 X 6.70 X 3.75 MM**

Carat Weight **0.87 CARAT**

Color Grade **E**

Clarity Grade **VVS 2**

Polish **VERY GOOD**

Symmetry **VERY GOOD**

Fluorescence **NONE**

Inscription(s) **IGI LG780671060**

Comments: This Laboratory Grown Diamond was created by Chemical Vapor Deposition (CVD) growth process. Type IIa

**LABORATORY GROWN DIAMOND REPORT**

March 6, 2026

IGI Report Number

**LG780671060**

Description

**LABORATORY GROWN DIAMOND**

Shape and Cutting Style

**HEART BRILLIANT**

Measurements

**5.86 X 6.70 X 3.75 MM**

**GRADING RESULTS**

Carat Weight

**0.87 CARAT**

Color Grade

**E**

Clarity Grade

**VVS 2**

**ADDITIONAL GRADING INFORMATION**

Polish

**VERY GOOD**

Symmetry

**VERY GOOD**

Fluorescence

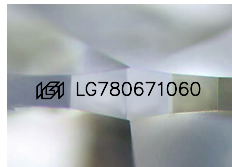
**NONE**

Inscription(s)

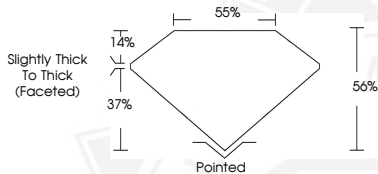
**IGI LG780671060**

Comments: This Laboratory Grown Diamond was created by Chemical Vapor Deposition (CVD) growth process.

Type IIa



Sample Image Used



March 6, 2026

IGI Report Number **LG780671060**

**HEART BRILLIANT**

**LABORATORY GROWN DIAMOND**

**5.86 X 6.70 X 3.75 MM**

Carat Weight **0.87 CARAT**

Color Grade **E**

Clarity Grade **VVS 2**

Polish **VERY GOOD**

Symmetry **VERY GOOD**

Fluorescence **NONE**

Inscription(s) **IGI LG780671060**

Comments: This Laboratory Grown Diamond was created by Chemical Vapor Deposition (CVD) growth process. Type IIa



THIS DOCUMENT WAS PRODUCED WITH THE FOLLOWING SECURITY MEASURES: SPECIAL DOCUMENT PAPER, INK SCREENS, WATERMARK, BACKGROUND DESIGNS, HOLOGRAM AND OTHER SECURITY FEATURES NOT LISTED AND DO EXCEED DOCUMENT SECURITY INDUSTRY GUIDELINES.