



ELECTRONIC COPY

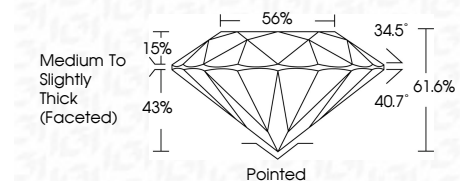
LG780668010 Report verification at igi.org



March 31, 2026 IGI Report Number LG780668010 Description LABORATORY GROWN DIAMOND Shape and Cutting Style ROUND BRILLIANT Measurements 8.59 - 8.62 X 5.30 MM

GRADING RESULTS

Carat Weight 2.42 CARATS Color Grade D Clarity Grade FLAWLESS Cut Grade IDEAL



ADDITIONAL GRADING INFORMATION

Polish EXCELLENT Symmetry EXCELLENT Fluorescence NONE Inscription(s) LG780668010 Comments: HEARTS & ARROWS As Grown - No indication of post-growth treatment. This Laboratory Grown Diamond was created by High Pressure High Temperature (HPHT) growth process. Type II



March 31, 2026 IGI Report No LG780668010 ROUND BRILLIANT 2.42 CARATS D FLAWLESS IDEAL 61.6% 56% Medium To Slightly Thick (Faceted) Pointed EXCELLENT EXCELLENT NONE LG780668010

Comments: HEARTS & ARROWS As Grown - No indication of post-growth treatment. This Laboratory Grown Diamond was created by High Pressure High Temperature (HPHT) growth process. Type II

LABORATORY GROWN DIAMOND REPORT

March 31, 2026 IGI Report Number LG780668010 Description LABORATORY GROWN DIAMOND Shape and Cutting Style ROUND BRILLIANT Measurements 8.59 - 8.62 X 5.30 MM

GRADING RESULTS

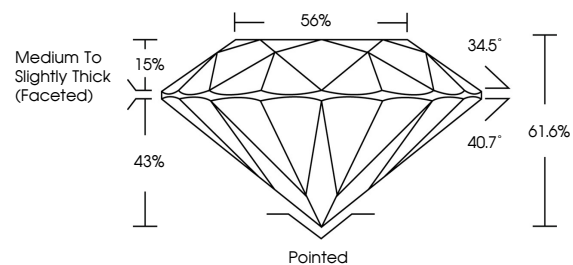
Carat Weight 2.42 CARATS Color Grade D Clarity Grade FLAWLESS Cut Grade IDEAL

ADDITIONAL GRADING INFORMATION

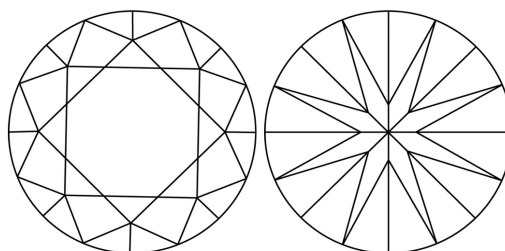
Polish EXCELLENT Symmetry EXCELLENT Fluorescence NONE Inscription(s) LG780668010

Comments: HEARTS & ARROWS As Grown - No indication of post-growth treatment. This Laboratory Grown Diamond was created by High Pressure High Temperature (HPHT) growth process. Type II

PROPORTIONS

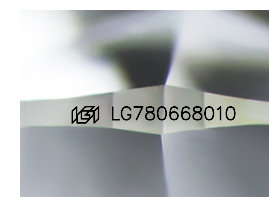
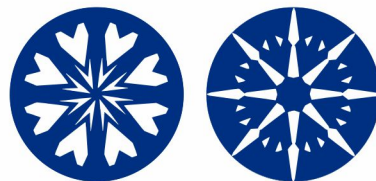


CLARITY CHARACTERISTICS



KEY TO SYMBOLS

Red symbols indicate internal characteristics. Green symbols indicate external characteristics.



Sample Image Used

COLOR

D E F G H I J Faint Very Light Light

CLARITY

FL IF VS 1-2 VS 1-2 SI 1-2 I 1-3 Flawless Internally Flawless Very Very Slightly Included Very Slightly Included Slightly Included Included

