



**ELECTRONIC COPY**

LG780667534  
Report verification at igi.org



March 18, 2026

IGI Report Number **LG780667534**

Description **LABORATORY GROWN DIAMOND**

Shape and Cutting Style **PEAR BRILLIANT**

Measurements **13.00 X 8.12 X 5.10 MM**

**GRADING RESULTS**

Carat Weight **3.10 CARATS**

Color Grade **D**

Clarity Grade **VVS 1**

March 18, 2026  
IGI Report Number **LG780667534**  
Description **LABORATORY GROWN DIAMOND**  
Shape and Cutting Style **PEAR BRILLIANT**  
Measurements **13.00 X 8.12 X 5.10 MM**

**GRADING RESULTS**

Carat Weight **3.10 CARATS**

Color Grade **D**

Clarity Grade **VVS 1**

**ADDITIONAL GRADING INFORMATION**

Polish **EXCELLENT**

Symmetry **EXCELLENT**

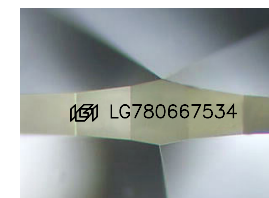
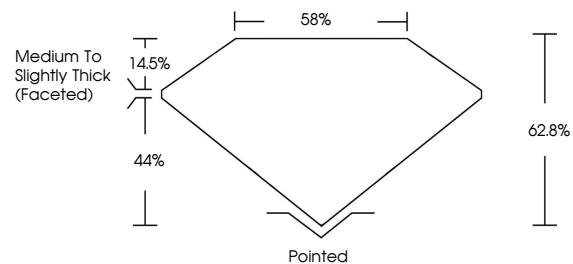
Fluorescence **NONE**

Inscription(s) **IGI LG780667534**

Comments: As Grown - No indication of post-growth treatment.

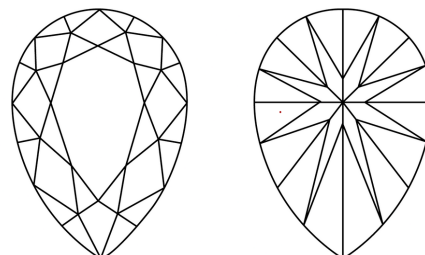
This Laboratory Grown Diamond was created by High Pressure High Temperature (HPHT) growth process. Type II

**PROPORTIONS**



Sample Image Used

**CLARITY CHARACTERISTICS**



**KEY TO SYMBOLS**

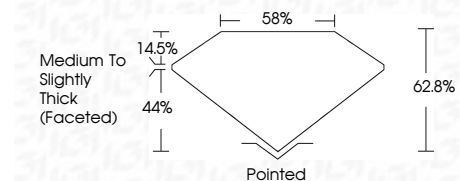
Red symbols indicate internal characteristics.  
Green symbols indicate external characteristics.

**COLOR**

D E F G H I J Faint Very Light Light

**CLARITY**

FL	IF	VS <sup>1-2</sup>	VS <sup>1-2</sup>	SI <sup>1-2</sup>	I <sup>1-3</sup>
Flawless	Internally Flawless	Very Very Slightly Included	Very Slightly Included	Slightly Included	Included



**ADDITIONAL GRADING INFORMATION**

Polish **EXCELLENT**

Symmetry **EXCELLENT**

Fluorescence **NONE**

Inscription(s) **IGI LG780667534**

Comments: As Grown - No indication of post-growth treatment.

This Laboratory Grown Diamond was created by High Pressure High Temperature (HPHT) growth process. Type II



**IGI**



March 18, 2026  
IGI Report No LG780667534  
PEAR BRILLIANT

3.10 CARATS  
D

13.00 X 8.12 X 5.10 MM

Carat Weight  
Color Grade  
Clarity Grade  
Table  
Depth  
Girdle

3.10 CARATS  
D  
VVS 1  
62.8%  
44%  
58%

Medium to Slightly Thick (Faceted)

Pointed  
EXCELLENT  
EXCELLENT  
NONE  
IGI LG780667534

Culet  
Polish  
Symmetry  
Fluorescence  
Inscription(s)

Comments:  
As Grown - No indication of post-growth treatment.  
This Laboratory Grown Diamond was created by High Pressure High Temperature (HPHT) growth process. Type II