



ELECTRONIC COPY

LG780665875
Report verification at igi.org



April 8, 2026

IGI Report Number **LG780665875**

Description **LABORATORY GROWN DIAMOND**

Shape and Cutting Style **CUT CORNERED
RECTANGULAR MODIFIED
BRILLIANT**

Measurements **10.77 X 7.62 X 5.50 MM**

GRADING RESULTS

Carat Weight **4.04 CARATS**

Color Grade **D**

Clarity Grade **FLAWLESS**

April 8, 2026

IGI Report Number **LG780665875**

Description **LABORATORY GROWN DIAMOND**

Shape and Cutting Style **CUT CORNERED RECTANGULAR
MODIFIED BRILLIANT**

Measurements **10.77 X 7.62 X 5.50 MM**

GRADING RESULTS

Carat Weight **4.04 CARATS**

Color Grade **D**

Clarity Grade **FLAWLESS**

ADDITIONAL GRADING INFORMATION

Polish **EXCELLENT**

Symmetry **EXCELLENT**

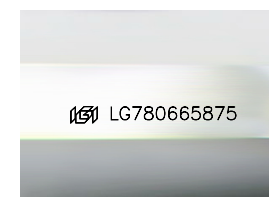
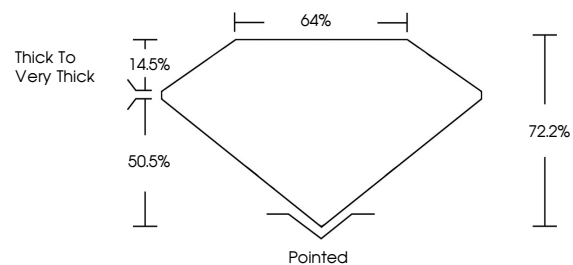
Fluorescence **NONE**

Inscription(s) **IGI LG780665875**

Comments: As Grown - No indication of post-growth treatment.

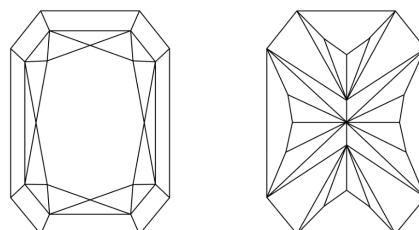
This Laboratory Grown Diamond was created by High Pressure High Temperature (HPHT) growth process. Type II

PROPORTIONS



Sample Image Used

CLARITY CHARACTERISTICS



KEY TO SYMBOLS

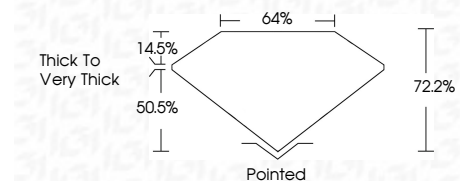
Red symbols indicate internal characteristics.
Green symbols indicate external characteristics.

COLOR

D E F G H I J Faint Very Light Light

CLARITY

FL	IF	VS ¹⁻²	VS ¹⁻²	SI ¹⁻²	I ¹⁻³
Flawless	Internally Flawless	Very Very Slightly Included	Very Slightly Included	Slightly Included	Included



ADDITIONAL GRADING INFORMATION

Polish **EXCELLENT**

Symmetry **EXCELLENT**

Fluorescence **NONE**

Inscription(s) **IGI LG780665875**

Comments: As Grown - No indication of post-growth treatment.

This Laboratory Grown Diamond was created by High Pressure High Temperature (HPHT) growth process. Type II



IGI



April 8, 2026
IGI Report No LG780665875
CUT CORNERED RECT. MODIFIED BRILLIANT
10.77 X 7.62 X 5.50 MM
4.04 CARATS
D
FLAWLESS
72.2%
64%
Thick to Very Thick
Pointed
EXCELLENT
EXCELLENT
NONE
IGI LG780665875

Comments: As Grown - No indication of post-growth treatment.
This Laboratory Grown Diamond was created by High Pressure High Temperature (HPHT) growth process. Type II