



ELECTRONIC COPY

LG780665793
Report verification at igi.org



March 31, 2026

IGI Report Number **LG780665793**

Description **LABORATORY GROWN DIAMOND**

Shape and Cutting Style **EMERALD CUT**

Measurements **10.69 X 7.37 X 4.80 MM**

GRADING RESULTS

Carat Weight **3.96 CARATS**

Color Grade **D**

Clarity Grade **FLAWLESS**

March 31, 2026
IGI Report Number **LG780665793**
Description **LABORATORY GROWN DIAMOND**
Shape and Cutting Style **EMERALD CUT**
Measurements **10.69 X 7.37 X 4.80 MM**

GRADING RESULTS

Carat Weight **3.96 CARATS**

Color Grade **D**

Clarity Grade **FLAWLESS**

ADDITIONAL GRADING INFORMATION

Polish **EXCELLENT**

Symmetry **EXCELLENT**

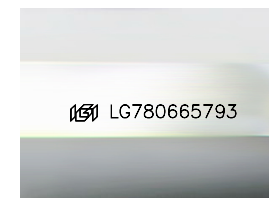
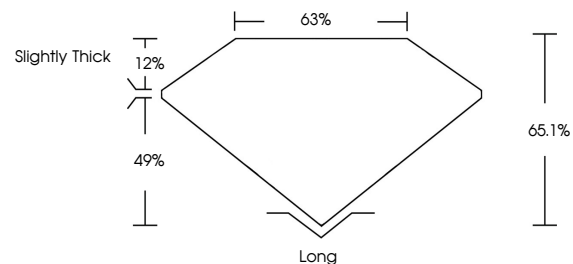
Fluorescence **NONE**

Inscription(s) **LG780665793**

Comments: As Grown - No indication of post-growth treatment.

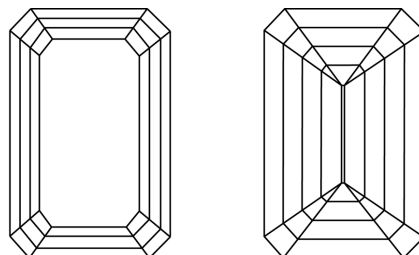
This Laboratory Grown Diamond was created by High Pressure High Temperature (HPHT) growth process. Type II

PROPORTIONS



Sample Image Used

CLARITY CHARACTERISTICS



KEY TO SYMBOLS

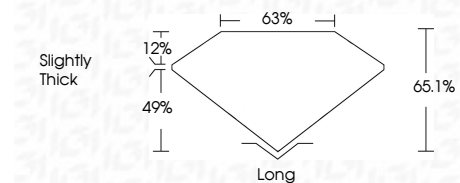
Red symbols indicate internal characteristics.
Green symbols indicate external characteristics.

COLOR

D E F G H I J Faint Very Light Light

CLARITY

FL	IF	VS ¹⁻²	VS ¹⁻²	SI ¹⁻²	I ¹⁻³
Flawless	Internally Flawless	Very Very Slightly Included	Very Slightly Included	Slightly Included	Included



ADDITIONAL GRADING INFORMATION

Polish **EXCELLENT**

Symmetry **EXCELLENT**

Fluorescence **NONE**

Inscription(s) **LG780665793**

Comments: As Grown - No indication of post-growth treatment.

This Laboratory Grown Diamond was created by High Pressure High Temperature (HPHT) growth process. Type II



IGI



March 31, 2026
IGI Report No **LG780665793**
EMERALD CUT
3.96 CARATS
Carat Weight **D**
Color Grade **FLAWLESS**
Clarity Grade **FLAWLESS**
Depth **65.1%**
Table **63%**
Girdle **Slightly Thick**
Culet **Long**
Polish **EXCELLENT**
Symmetry **EXCELLENT**
Fluorescence **NONE**
Inscription(s) **LG780665793**
Comments: As Grown - No indication of post-growth treatment.
This Laboratory Grown Diamond was created by High Pressure High Temperature (HPHT) growth process. Type II