



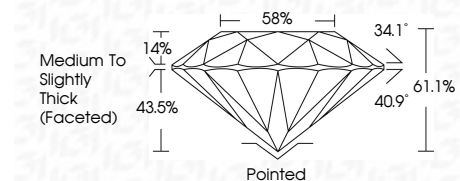
ELECTRONIC COPY

LG780663714 Report verification at igi.org



April 27, 2026 IGI Report Number LG780663714 Description LABORATORY GROWN DIAMOND Shape and Cutting Style ROUND BRILLIANT Measurements 7.35 - 7.39 X 4.50 MM

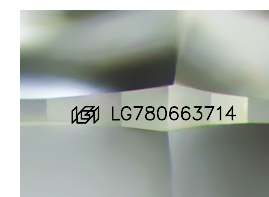
GRADING RESULTS Carat Weight 1.51 CARAT Color Grade D Clarity Grade FLAWLESS Cut Grade IDEAL



ADDITIONAL GRADING INFORMATION Polish EXCELLENT Symmetry EXCELLENT Fluorescence NONE Inscription(s) LG780663714 Comments: As Grown - No indication of post-growth treatment. This Laboratory Grown Diamond was created by High Pressure High Temperature (HPHT) growth process. Type II

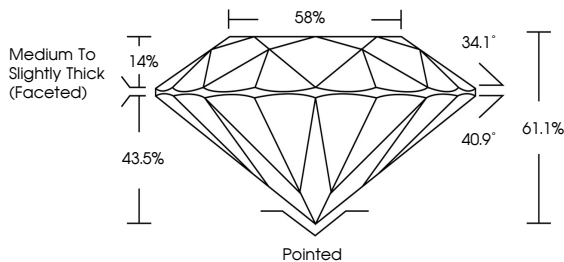


April 27, 2026 IGI Report No LG780663714 ROUND BRILLIANT 1.51 CARAT D FLAWLESS IDEAL 61.1% 88% Medium To Slightly Thick (Faceted) Pointed EXCELLENT EXCELLENT NONE LG780663714



Sample Image Used

PROPORTIONS



CLARITY CHARACTERISTICS



KEY TO SYMBOLS Red symbols indicate internal characteristics. Green symbols indicate external characteristics.

COLOR

Color scale table with categories D, E, F, G, H, I, J, Faint, Very Light, Light

CLARITY

Clarity scale table with categories FL, IF, VS 1-2, VS 1-2, SI 1-2, I 1-3, Flawless, Internally Flawless, Very Very Slightly Included, Very Slightly Included, Slightly Included, Included

April 27, 2026 IGI Report Number LG780663714 Description LABORATORY GROWN DIAMOND Shape and Cutting Style ROUND BRILLIANT Measurements 7.35 - 7.39 X 4.50 MM

GRADING RESULTS Carat Weight 1.51 CARAT Color Grade D Clarity Grade FLAWLESS Cut Grade IDEAL

ADDITIONAL GRADING INFORMATION Polish EXCELLENT Symmetry EXCELLENT Fluorescence NONE Inscription(s) LG780663714

Comments: As Grown - No indication of post-growth treatment. This Laboratory Grown Diamond was created by High Pressure High Temperature (HPHT) growth process. Type II

