



**ELECTRONIC COPY**

LG780663239  
Report verification at igi.org



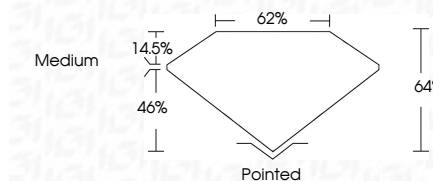
April 21, 2026  
IGI Report Number **LG780663239**  
Description **LABORATORY GROWN DIAMOND**

Shape and Cutting Style **CUT CORNERED  
RECTANGULAR MODIFIED  
BRILLIANT**

Measurements **8.51 X 5.72 X 3.66 MM**

**GRADING RESULTS**

Carat Weight **1.53 CARAT**  
Color Grade **D**  
Clarity Grade **FLAWLESS**

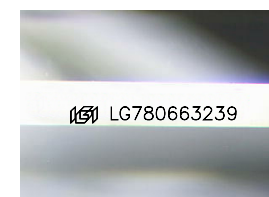


**ADDITIONAL GRADING INFORMATION**

Polish **EXCELLENT**  
Symmetry **EXCELLENT**  
Fluorescence **NONE**  
Inscription(s) **IGI LG780663239**  
Comments: As Grown - No indication of post-growth treatment.  
This Laboratory Grown Diamond was created by High Pressure High Temperature (HPHT) growth process. Type II

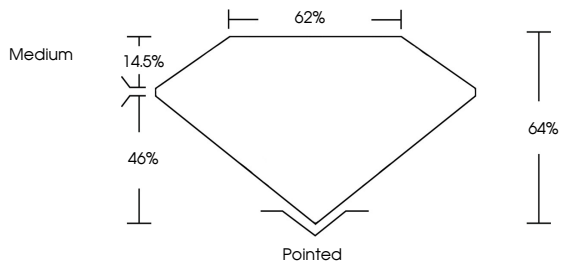


April 21, 2026  
IGI Report No LG780663239  
CUT CORNERED RECT. MODIFIED BRILLIANT  
1.53 CARAT  
D  
FLAWLESS  
D  
8.51 X 5.72 X 3.66 MM  
Color Grade  
Depth 46%  
Table 14.5%  
Girdle 62%  
Medium  
Pointed  
EXCELLENT  
EXCELLENT  
NONE  
IGI LG780663239  
Comments: As Grown - No indication of post-growth treatment.  
This Laboratory Grown Diamond was created by High Pressure High Temperature (HPHT) growth process. Type II

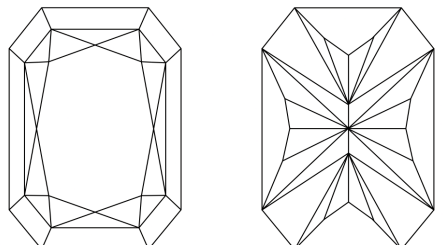


Sample Image Used

**PROPORTIONS**



**CLARITY CHARACTERISTICS**



**KEY TO SYMBOLS**

Red symbols indicate internal characteristics.  
Green symbols indicate external characteristics.

**COLOR**

D E F G H I J Faint Very Light Light

**CLARITY**

FL	IF	VS <sup>1-2</sup>	VS <sup>1-2</sup>	SI <sup>1-2</sup>	I <sup>1-3</sup>
Flawless	Internally Flawless	Very Very Slightly Included	Very Slightly Included	Slightly Included	Included

