



ELECTRONIC COPY

LG780661563
Report verification at igi.org



March 19, 2026
IGI Report Number **LG780661563**
Description **LABORATORY GROWN DIAMOND**
Shape and Cutting Style **PRINCESS CUT**
Measurements **7.43 X 7.28 X 5.17 MM**
GRADING RESULTS
Carat Weight **2.37 CARATS**
Color Grade **D**
Clarity Grade **VVS 1**

March 19, 2026
IGI Report Number **LG780661563**
Description **LABORATORY GROWN DIAMOND**
Shape and Cutting Style **PRINCESS CUT**
Measurements **7.43 X 7.28 X 5.17 MM**

GRADING RESULTS

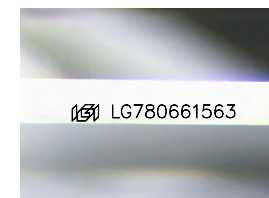
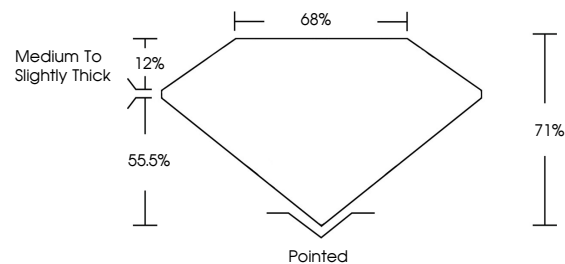
Carat Weight **2.37 CARATS**
Color Grade **D**
Clarity Grade **VVS 1**

ADDITIONAL GRADING INFORMATION

Polish **EXCELLENT**
Symmetry **EXCELLENT**
Fluorescence **NONE**
Inscription(s) **IGI LG780661563**

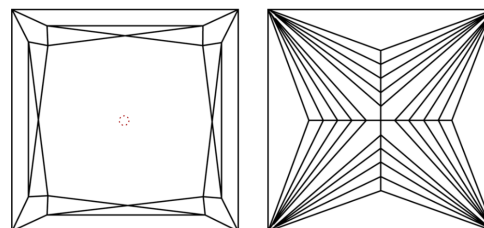
Comments: As Grown - No indication of post-growth treatment.
This Laboratory Grown Diamond was created by High Pressure High Temperature (HPHT) growth process.
Type II

PROPORTIONS



Sample Image Used

CLARITY CHARACTERISTICS



KEY TO SYMBOLS

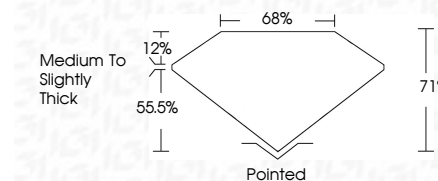
Red symbols indicate internal characteristics.
Green symbols indicate external characteristics.

COLOR

D E F G H I J Faint Very Light Light

CLARITY

FL	IF	VS ¹⁻²	VS ¹⁻²	SI ¹⁻²	I ¹⁻³
Flawless	Internally Flawless	Very Very Slightly Included	Very Slightly Included	Slightly Included	Included



ADDITIONAL GRADING INFORMATION

Polish **EXCELLENT**
Symmetry **EXCELLENT**
Fluorescence **NONE**
Inscription(s) **IGI LG780661563**
Comments: As Grown - No indication of post-growth treatment.
This Laboratory Grown Diamond was created by High Pressure High Temperature (HPHT) growth process.
Type II



IGI



March 19, 2026
IGI Report No LG780661563
PRINCESS CUT
7.43 X 7.28 X 5.17 MM
2.37 CARATS
D
VVS 1
71%
68%
Medium to Slightly Thick
Pointed
EXCELLENT
EXCELLENT
NONE
IGI LG780661563

Comments: As Grown - No indication of post-growth treatment.
This Laboratory Grown Diamond was created by High Pressure High Temperature (HPHT) growth process.
Type II