



ELECTRONIC COPY

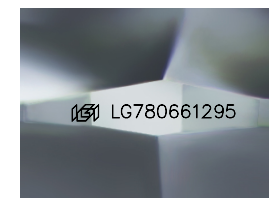
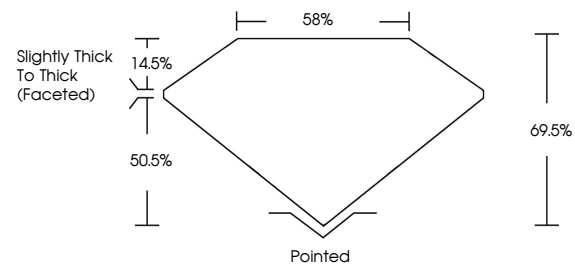
LG780661295
Report verification at igi.org



March 18, 2026
IGI Report Number **LG780661295**
Description **LABORATORY GROWN DIAMOND**
Shape and Cutting Style **CUSHION MODIFIED BRILLIANT**
Measurements **10.71 X 8.91 X 6.19 MM**
GRADING RESULTS
Carat Weight **4.54 CARATS**
Color Grade **D**
Clarity Grade **FLAWLESS**

March 18, 2026
IGI Report Number **LG780661295**
Description **LABORATORY GROWN DIAMOND**
Shape and Cutting Style **CUSHION MODIFIED BRILLIANT**
Measurements **10.71 X 8.91 X 6.19 MM**

PROPORTIONS

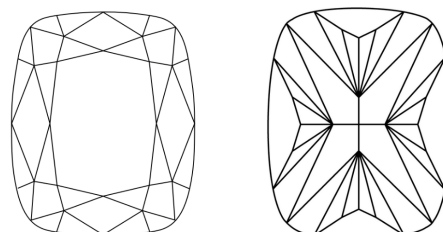


Sample Image Used

GRADING RESULTS

Carat Weight **4.54 CARATS**
Color Grade **D**
Clarity Grade **FLAWLESS**

CLARITY CHARACTERISTICS



KEY TO SYMBOLS

Red symbols indicate internal characteristics.
Green symbols indicate external characteristics.

ADDITIONAL GRADING INFORMATION

Polish **EXCELLENT**
Symmetry **EXCELLENT**
Fluorescence **NONE**
Inscription(s) **IGI LG780661295**

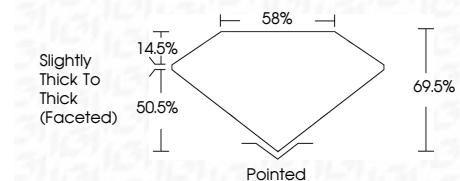
Comments: As Grown - No indication of post-growth treatment.
This Laboratory Grown Diamond was created by High Pressure High Temperature (HPHT) growth process.
Type II

COLOR

D E F G H I J Faint Very Light Light

CLARITY

FL	IF	VS ¹⁻²	VS ¹⁻²	SI ¹⁻²	I ¹⁻³
Flawless	Internally Flawless	Very Very Slightly Included	Very Slightly Included	Slightly Included	Included



ADDITIONAL GRADING INFORMATION

Polish **EXCELLENT**
Symmetry **EXCELLENT**
Fluorescence **NONE**
Inscription(s) **IGI LG780661295**
Comments: As Grown - No indication of post-growth treatment.
This Laboratory Grown Diamond was created by High Pressure High Temperature (HPHT) growth process.
Type II



March 18, 2026
IGI Report No **LG780661295**
CUSHION MODIFIED BRILLIANT
10.71 X 8.91 X 6.19 MM
Carat Weight **4.54 CARATS**
Color Grade **D**
Clarity Grade **FLAWLESS**
Depth **69.5%**
Table **50.5%**
Girdle **Slightly Thick To Thick (Faceted)**
Culet **Pointed**
Polish **EXCELLENT**
Symmetry **EXCELLENT**
Fluorescence **NONE**
Inscription(s) **IGI LG780661295**
Comments: As Grown - No indication of post-growth treatment.
This Laboratory Grown Diamond was created by High Pressure High Temperature (HPHT) growth process.
Type II