



ELECTRONIC COPY

LG780657908
Report verification at igi.org



March 18, 2026
IGI Report Number **LG780657908**
Description **LABORATORY GROWN DIAMOND**
Shape and Cutting Style **HEART BRILLIANT**
Measurements **7.56 X 8.76 X 5.05 MM**
GRADING RESULTS
Carat Weight **2.63 CARATS**
Color Grade **FANCY BROWN ORANGE**
Clarity Grade **VS 1**

March 18, 2026
IGI Report Number **LG780657908**
Description **LABORATORY GROWN DIAMOND**
Shape and Cutting Style **HEART BRILLIANT**
Measurements **7.56 X 8.76 X 5.05 MM**

GRADING RESULTS

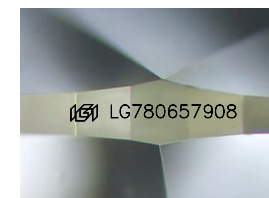
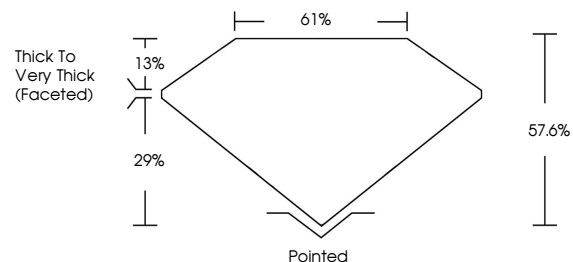
Carat Weight **2.63 CARATS**
Color Grade **FANCY BROWN ORANGE**
Clarity Grade **VS 1**

ADDITIONAL GRADING INFORMATION

Polish **EXCELLENT**
Symmetry **EXCELLENT**
Fluorescence **SLIGHT**
Inscription(s) **LG780657908**

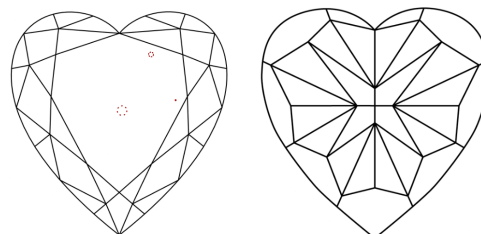
Comments: This Laboratory Grown Diamond was created by Chemical Vapor Deposition (CVD) growth process.
Indications of post-growth treatment.

PROPORTIONS



Sample Image Used

CLARITY CHARACTERISTICS



KEY TO SYMBOLS

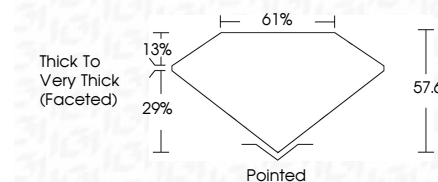
Red symbols indicate internal characteristics.
Green symbols indicate external characteristics.

COLOR

D E F G H I J Faint Very Light Light

CLARITY

FL	IF	VS ¹⁻²	VS ¹⁻²	SI ¹⁻²	I ¹⁻³
Flawless	Internally Flawless	Very Very Slightly Included	Very Slightly Included	Slightly Included	Included



ADDITIONAL GRADING INFORMATION

Polish **EXCELLENT**
Symmetry **EXCELLENT**
Fluorescence **SLIGHT**
Inscription(s) **LG780657908**
Comments: This Laboratory Grown Diamond was created by Chemical Vapor Deposition (CVD) growth process.
Indications of post-growth treatment.



IGI



March 18, 2026
IGI Report No **LG780657908**
HEART BRILLIANT
2.63 CARATS
Carat Weight
FANCY BROWN ORANGE
Color Grade
VS 1
Clarity Grade
61%
Table
57.6%
Depth
Thick to Very Thick (Faceted)
Girdle
Pointed
Culet
EXCELLENT
Polish
EXCELLENT
Symmetry
EXCELLENT
Fluorescence
SLIGHT
Inscription(s)
 LG780657908

Comments: This Laboratory Grown Diamond was created by Chemical Vapor Deposition (CVD) growth process.
Indications of post-growth treatment.