



ELECTRONIC COPY

LG780656905
Report verification at igi.org



March 13, 2026
IGI Report Number LG780656905
Description LABORATORY GROWN DIAMOND
Shape and Cutting Style CUT CORNERED RECTANGULAR MIXED CUT
Measurements 8.67 X 6.22 X 4.15 MM
GRADING RESULTS
Carat Weight 2.09 CARATS
Color Grade FANCY INTENSE YELLOW
Clarity Grade VS 1

LABORATORY GROWN DIAMOND REPORT

March 13, 2026
IGI Report Number LG780656905
Description LABORATORY GROWN DIAMOND
Shape and Cutting Style CUT CORNERED RECTANGULAR MIXED CUT
Measurements 8.67 X 6.22 X 4.15 MM

GRADING RESULTS

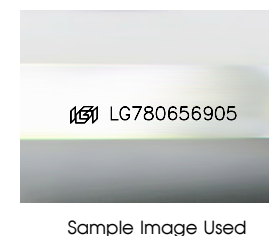
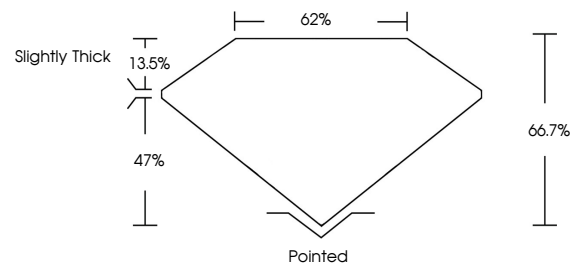
Carat Weight 2.09 CARATS
Color Grade FANCY INTENSE YELLOW
Clarity Grade VS 1

ADDITIONAL GRADING INFORMATION

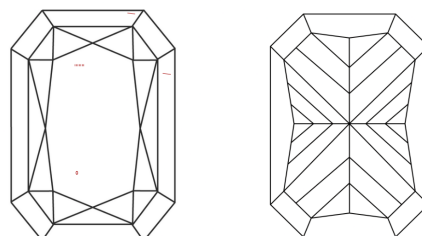
Polish EXCELLENT
Symmetry EXCELLENT
Fluorescence NONE
Inscription(s) IGI LG780656905

Comments: This Laboratory Grown Diamond was created by Chemical Vapor Deposition (CVD) growth process.

PROPORTIONS



CLARITY CHARACTERISTICS



KEY TO SYMBOLS

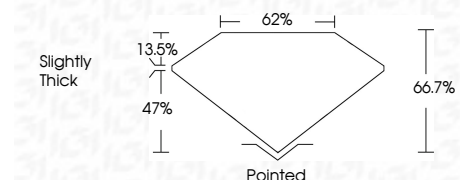
Red symbols indicate internal characteristics.
Green symbols indicate external characteristics.

COLOR

D E F G H I J Faint Very Light Light

CLARITY

FL IF VS 1-2 VS 2-2 SI 1-2 I 1-3
Flawless Internally Flawless Very Very Slightly Included Very Slightly Included Slightly Included Included



ADDITIONAL GRADING INFORMATION

Polish EXCELLENT
Symmetry EXCELLENT
Fluorescence NONE
Inscription(s) IGI LG780656905
Comments: This Laboratory Grown Diamond was created by Chemical Vapor Deposition (CVD) growth process.



March 13, 2026
IGI Report No LG780656905
CUT CORNERED RECT. MIXED CUT
8.67 X 6.22 X 4.15 MM
2.09 CARATS
FANCY INTENSE YELLOW
VS 1
66.7%
62%
Slightly Thick
Pointed
EXCELLENT
EXCELLENT
NONE
IGI LG780656905
Comments: This Laboratory Grown Diamond was created by Chemical Vapor Deposition (CVD) growth process.