



ELECTRONIC COPY

LG780655981
Report verification at igi.org



March 15, 2026

IGI Report Number **LG780655981**

Description **LABORATORY GROWN DIAMOND**

Shape and Cutting Style **ROUND BRILLIANT**

Measurements **7.45 - 7.49 X 4.61 MM**

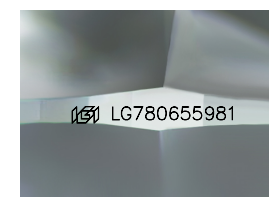
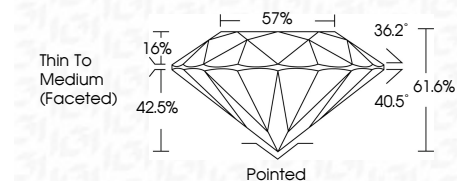
GRADING RESULTS

Carat Weight **1.58 CARAT**

Color Grade **D**

Clarity Grade **VVS 2**

Cut Grade **IDEAL**



Sample Image Used

ADDITIONAL GRADING INFORMATION

Polish **EXCELLENT**

Symmetry **EXCELLENT**

Fluorescence **NONE**

Inscription(s) **IGI LG780655981**

Comments: As Grown - No indication of post-growth treatment.

This Laboratory Grown Diamond was created by High Pressure High Temperature (HPHT) growth process.

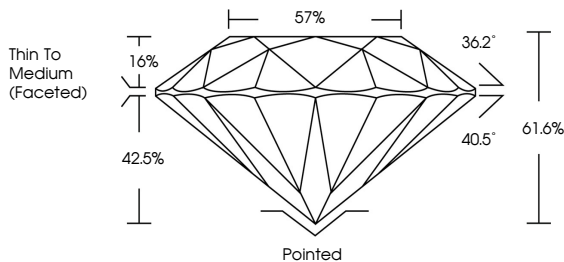
Type II



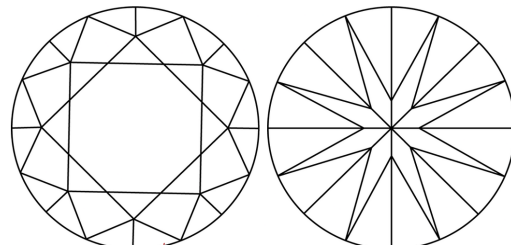
March 15, 2026	IGI Report No LG780655981	1.58 CARAT	D	VVS 2	IDEAL	61.6%	57%	Thin To Medium (Faceted)	Pointed	EXCELLENT	EXCELLENT	NONE	IGI LG780655981
IGI Report No LG780655981	ROUND BRILLIANT	7.45 - 7.49 X 4.61 MM	Color Grade	Clarity Grade	Cut Grade	Depth	Table	IGI	Culet	Polish	Symmetry	Fluorescence	Inscription(s)

Comments: As Grown - No indication of post-growth treatment. This Laboratory Grown Diamond was created by High Pressure High Temperature (HPHT) growth process. Type II

PROPORTIONS



CLARITY CHARACTERISTICS



KEY TO SYMBOLS

Red symbols indicate internal characteristics.
Green symbols indicate external characteristics.

COLOR

D	E	F	G	H	I	J	Faint	Very Light	Light
---	---	---	---	---	---	---	-------	------------	-------

CLARITY

FL	IF	VVS ¹⁻²	VS ¹⁻²	SI ¹⁻²	I ¹⁻³
Flawless	Internally Flawless	Very Very Slightly Included	Very Slightly Included	Slightly Included	Included

