



ELECTRONIC COPY

LG780650575
Report verification at igi.org



March 12, 2026
IGI Report Number **LG780650575**
Description **LABORATORY GROWN DIAMOND**
Shape and Cutting Style **CUT CORNERED
RECTANGULAR MODIFIED
BRILLIANT**
Measurements **11.32 X 7.77 X 5.11 MM**
GRADING RESULTS
Carat Weight **3.87 CARATS**
Color Grade **E**
Clarity Grade **VS 1**

March 12, 2026
IGI Report Number **LG780650575**
Description **LABORATORY GROWN DIAMOND**
Shape and Cutting Style **CUT CORNERED RECTANGULAR
MODIFIED BRILLIANT**
Measurements **11.32 X 7.77 X 5.11 MM**

GRADING RESULTS

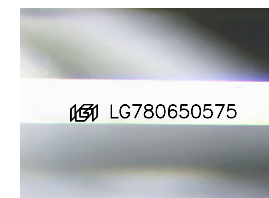
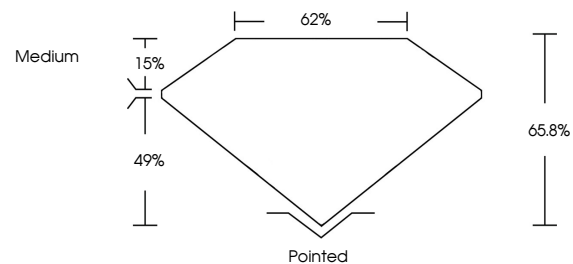
Carat Weight **3.87 CARATS**
Color Grade **E**
Clarity Grade **VS 1**

ADDITIONAL GRADING INFORMATION

Polish **EXCELLENT**
Symmetry **EXCELLENT**
Fluorescence **NONE**
Inscription(s) **IGI LG780650575**

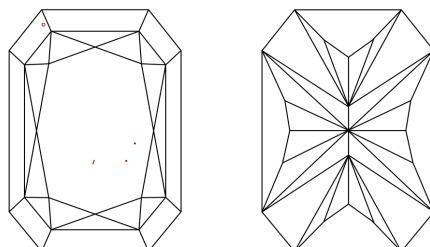
Comments: This Laboratory Grown Diamond was created by Chemical Vapor Deposition (CVD) growth process.
Type IIa

PROPORTIONS



Sample Image Used

CLARITY CHARACTERISTICS



KEY TO SYMBOLS

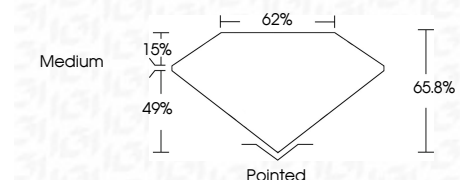
Red symbols indicate internal characteristics.
Green symbols indicate external characteristics.

COLOR

D E F G H I J Faint Very Light Light

CLARITY

FL	IF	VS ¹⁻²	VS ¹⁻²	SI ¹⁻²	I ¹⁻³
Flawless	Internally Flawless	Very Very Slightly Included	Very Slightly Included	Slightly Included	Included



ADDITIONAL GRADING INFORMATION

Polish **EXCELLENT**
Symmetry **EXCELLENT**
Fluorescence **NONE**
Inscription(s) **IGI LG780650575**
Comments: This Laboratory Grown Diamond was created by Chemical Vapor Deposition (CVD) growth process.
Type IIa



IGI



March 12, 2026
IGI Report No **LG780650575**
CUT CORNERED RECT. MODIFIED BRILLIANT
11.32 X 7.77 X 5.11 MM
3.87 CARATS
E
Color Grade
VS 1
65.8%
49%
62%
Medium
Pointed
EXCELLENT
EXCELLENT
NONE
IGI LG780650575

Comments: This Laboratory Grown Diamond was created by Chemical Vapor Deposition (CVD) growth process.
Type IIa