



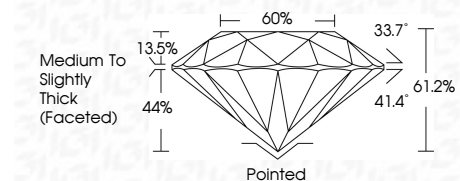
**ELECTRONIC COPY**

LG780650455  
Report verification at igi.org



March 13, 2026  
IGI Report Number **LG780650455**  
Description **LABORATORY GROWN DIAMOND**  
Shape and Cutting Style **ROUND BRILLIANT**  
Measurements **7.39 - 7.46 X 4.54 MM**

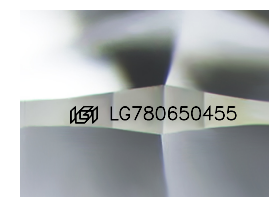
**GRADING RESULTS**  
Carat Weight **1.53 CARAT**  
Color Grade **F**  
Clarity Grade **VS 1**  
Cut Grade **IDEAL**



**ADDITIONAL GRADING INFORMATION**  
Polish **EXCELLENT**  
Symmetry **EXCELLENT**  
Fluorescence **NONE**  
Inscription(s) **IGI LG780650455**  
Comments: This Laboratory Grown Diamond was created by Chemical Vapor Deposition (CVD) growth process. Type IIa

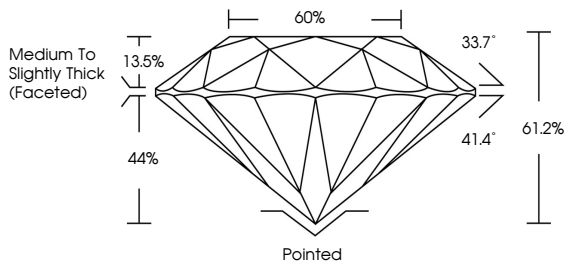


March 13, 2026  
IGI Report No LG780650455  
**ROUND BRILLIANT**  
1.53 CARAT  
Color Grade **F**  
Clarity Grade **VS 1**  
Cut Grade **IDEAL**  
Depth **61.2%**  
Table **60%**  
Crown Height **Medium To Slightly Thick (Faceted)**  
Crown Angle **33.7°**  
Pavilion Angle **41.4°**  
Total Depth **61.2%**  
Culet **Pointed**  
Polish **EXCELLENT**  
Symmetry **EXCELLENT**  
Fluorescence **NONE**  
Inscription(s) **IGI LG780650455**  
Comments: This Laboratory Grown Diamond was created by Chemical Vapor Deposition (CVD) growth process. Type IIa

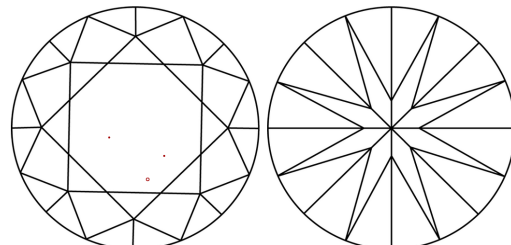


Sample Image Used

**PROPORTIONS**



**CLARITY CHARACTERISTICS**



**KEY TO SYMBOLS**  
Red symbols indicate internal characteristics.  
Green symbols indicate external characteristics.

**COLOR**

D	E	F	G	H	I	J	Faint	Very Light	Light
---	---	---	---	---	---	---	-------	------------	-------

**CLARITY**

FL	IF	VS <sup>1-2</sup>	VS <sup>1-2</sup>	SI <sup>1-2</sup>	I <sup>1-3</sup>
Flawless	Internally Flawless	Very Very Slightly Included	Very Slightly Included	Slightly Included	Included

