



March 18, 2026

IGI Report Number LG780649152
OVAL MODIFIED BRILLIANT
LABORATORY GROWN DIAMOND
7.24 X 4.93 X 3.20 MM
Carat Weight 0.89 CARAT
Color Grade FANCY VIVID PINK
Clarity Grade VVS 2
Polish EXCELLENT
Symmetry EXCELLENT
Fluorescence STRONG
Inscription(s) IGI LG780649152

Comments: This Laboratory Grown Diamond was created by Chemical Vapor Deposition (CVD) growth process. Indications of post-growth treatment.

LABORATORY GROWN DIAMOND REPORT

March 18, 2026
 IGI Report Number **LG780649152**
 Description **LABORATORY GROWN DIAMOND**
 Shape and Cutting Style **OVAL MODIFIED BRILLIANT**
 Measurements **7.24 X 4.93 X 3.20 MM**

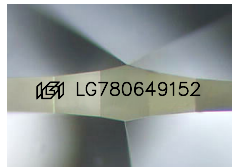
GRADING RESULTS

Carat Weight 0.89 CARAT
Color Grade FANCY VIVID PINK
Clarity Grade VVS 2

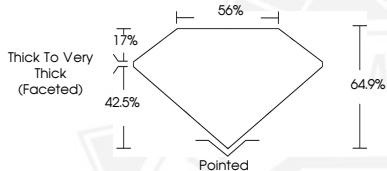
ADDITIONAL GRADING INFORMATION

Polish EXCELLENT
Symmetry EXCELLENT
Fluorescence STRONG
Inscription(s) IGI LG780649152

Comments: This Laboratory Grown Diamond was created by Chemical Vapor Deposition (CVD) growth process. Indications of post-growth treatment.



Sample Image Used



March 18, 2026

IGI Report Number LG780649152
OVAL MODIFIED BRILLIANT
LABORATORY GROWN DIAMOND
7.24 X 4.93 X 3.20 MM
Carat Weight 0.89 CARAT
Color Grade FANCY VIVID PINK
Clarity Grade VVS 2
Polish EXCELLENT
Symmetry EXCELLENT
Fluorescence STRONG
Inscription(s) IGI LG780649152

Comments: This Laboratory Grown Diamond was created by Chemical Vapor Deposition (CVD) growth process. Indications of post-growth treatment.



THIS DOCUMENT WAS PRODUCED WITH THE FOLLOWING SECURITY MEASURES: SPECIAL DOCUMENT PAPER, INK SCREENS, WATERMARK, BACKGROUND DESIGNS, HOLOGRAM AND OTHER SECURITY FEATURES NOT LISTED AND DO EXCEED DOCUMENT SECURITY INDUSTRY GUIDELINES.