



ELECTRONIC COPY

LG780645750
Report verification at igi.org



March 13, 2026

IGI Report Number LG780645750

Description LABORATORY GROWN DIAMOND

Shape and Cutting Style PRINCESS CUT

Measurements 6.85 X 6.82 X 4.97 MM

GRADING RESULTS

Carat Weight 2.08 CARATS

Color Grade D

Clarity Grade VVS 2

March 13, 2026
IGI Report Number LG780645750
Description LABORATORY GROWN DIAMOND
Shape and Cutting Style PRINCESS CUT
Measurements 6.85 X 6.82 X 4.97 MM

GRADING RESULTS

Carat Weight 2.08 CARATS

Color Grade D

Clarity Grade VVS 2

ADDITIONAL GRADING INFORMATION

Polish EXCELLENT

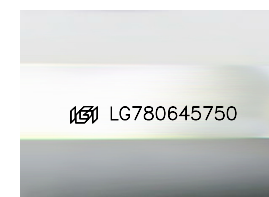
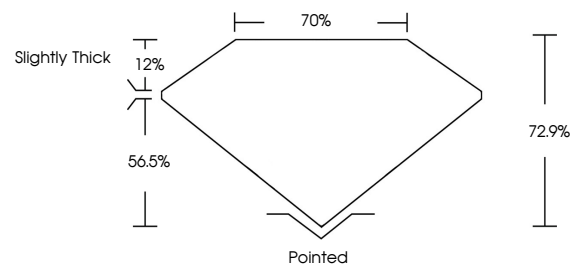
Symmetry EXCELLENT

Fluorescence NONE

Inscription(s) IGI LG780645750

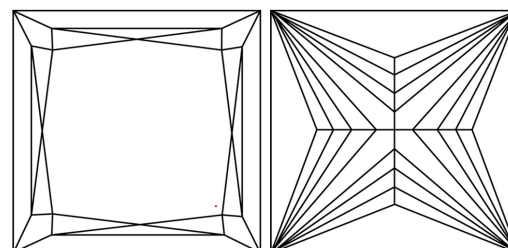
Comments: This Laboratory Grown Diamond was created by Chemical Vapor Deposition (CVD) growth process. Type IIa

PROPORTIONS



Sample Image Used

CLARITY CHARACTERISTICS



KEY TO SYMBOLS

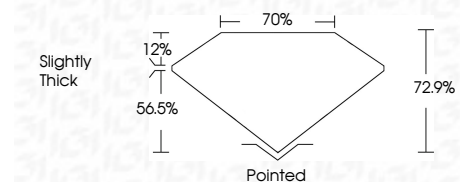
Red symbols indicate internal characteristics. Green symbols indicate external characteristics.

COLOR

D E F G H I J Faint Very Light Light

CLARITY

FL IF VVS 1-2 VS 1-2 SI 1-2 I 1-3
Flawless Internally Flawless Very Very Slightly Included Very Slightly Included Slightly Included Included



ADDITIONAL GRADING INFORMATION

Polish EXCELLENT

Symmetry EXCELLENT

Fluorescence NONE

Inscription(s) IGI LG780645750

Comments: This Laboratory Grown Diamond was created by Chemical Vapor Deposition (CVD) growth process. Type IIa



March 13, 2026
IGI Report No LG780645750
PRINCESS CUT
2.08 CARATS
D
6.85 X 6.82 X 4.97 MM
Carat Weight
Color Grade
Clarity Grade
Depth
Table
Girdle
Slightly Thick
Pointed
Polish
Symmetry
Fluorescence
Inscription(s)
EXCELLENT
EXCELLENT
NONE
IGI LG780645750
Comments: This Laboratory Grown Diamond was created by Chemical Vapor Deposition (CVD) growth process. Type IIa