



LABORATORY GROWN DIAMOND REPORT

March 12, 2026
 IGI Report Number **LG780645051**
 Description **LABORATORY GROWN DIAMOND**
 Shape and Cutting Style **ROUND BRILLIANT**
 Measurements **4.35 - 4.38 X 2.65 MM**

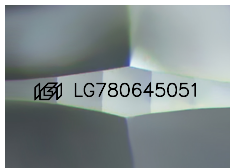
GRADING RESULTS

Carat Weight **0.32 CARAT**
 Color Grade **FANCY INTENSE YELLOW**
 Clarity Grade **VS 1**
 Cut Grade **EXCELLENT**

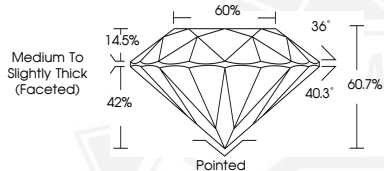
ADDITIONAL GRADING INFORMATION

Polish **EXCELLENT**
 Symmetry **VERY GOOD**
 Fluorescence **NONE**
 Inscription(s) **IGI LG780645051**

Comments: As Grown - No indication of post-growth treatment.
 This Laboratory Grown Diamond was created by High Pressure High Temperature (HPHT) growth process.



Sample Image Used



March 12, 2026
 IGI Report Number **LG780645051**
ROUND BRILLIANT
LABORATORY GROWN DIAMOND
4.35 - 4.38 X 2.65 MM
 Carat Weight **0.32 CARAT**
 Color Grade **FANCY INTENSE YELLOW**
 Clarity Grade **VS 1**
 Cut Grade **EXCELLENT**
 Polish **EXCELLENT**
 Symmetry **VERY GOOD**
 Fluorescence **NONE**
 Inscription(s) **IGI LG780645051**

Comments: As Grown - No indication of post-growth treatment. This Laboratory Grown Diamond was created by High Pressure High Temperature (HPHT) growth process.



March 12, 2026
 IGI Report Number **LG780645051**
ROUND BRILLIANT
LABORATORY GROWN DIAMOND
4.35 - 4.38 X 2.65 MM
 Carat Weight **0.32 CARAT**
 Color Grade **FANCY INTENSE YELLOW**
 Clarity Grade **VS 1**
 Cut Grade **EXCELLENT**
 Polish **EXCELLENT**
 Symmetry **VERY GOOD**
 Fluorescence **NONE**
 Inscription(s) **IGI LG780645051**

Comments: As Grown - No indication of post-growth treatment. This Laboratory Grown Diamond was created by High Pressure High Temperature (HPHT) growth process.



THIS DOCUMENT WAS PRODUCED WITH THE FOLLOWING SECURITY MEASURES: SPECIAL DOCUMENT PAPER, INK SCREENS, WATERMARK, BACKGROUND DESIGNS, HOLOGRAM AND OTHER SECURITY FEATURES NOT LISTED AND DO EXCEED DOCUMENT SECURITY INDUSTRY GUIDELINES.