



**ELECTRONIC COPY**

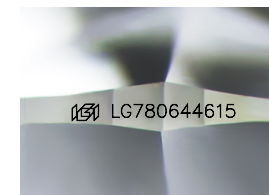
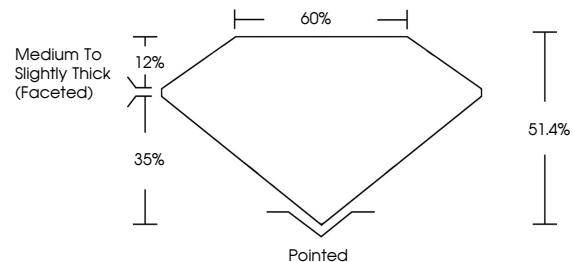
LG780644615  
Report verification at [igi.org](http://igi.org)



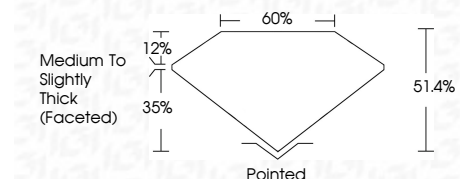
March 17, 2026  
IGI Report Number **LG780644615**  
Description **LABORATORY GROWN DIAMOND**  
Shape and Cutting Style **TRIANGULAR MODIFIED  
BRILLIANT**  
Measurements **6.82 X 6.83 X 3.51 MM**  
**GRADING RESULTS**  
Carat Weight **1.09 CARAT**  
Color Grade **O-P**  
Clarity Grade **VVS 2**

March 17, 2026  
IGI Report Number **LG780644615**  
Description **LABORATORY GROWN DIAMOND**  
Shape and Cutting Style **TRIANGULAR MODIFIED  
BRILLIANT**  
Measurements **6.82 X 6.83 X 3.51 MM**  
**GRADING RESULTS**  
Carat Weight **1.09 CARAT**  
Color Grade **O-P**  
Clarity Grade **VVS 2**

**PROPORTIONS**



Sample Image Used



**ADDITIONAL GRADING INFORMATION**

Polish **EXCELLENT**  
Symmetry **EXCELLENT**  
Fluorescence **NONE**  
Inscription(s) **IGI LG780644615**

Comments: This Laboratory Grown Diamond was created by Chemical Vapor Deposition (CVD) growth process.  
Type IIa

**ADDITIONAL GRADING INFORMATION**

Polish **EXCELLENT**  
Symmetry **EXCELLENT**  
Fluorescence **NONE**  
Inscription(s) **IGI LG780644615**  
Comments: This Laboratory Grown Diamond was created by Chemical Vapor Deposition (CVD) growth process.  
Type IIa

**COLOR**

D E F G H I J Faint Very Light Light

**CLARITY**

FL	IF	VVS <sup>1-2</sup>	VS <sup>1-2</sup>	SI <sup>1-2</sup>	I <sup>1-3</sup>
Flawless	Internally Flawless	Very Very Slightly Included	Very Slightly Included	Slightly Included	Included



**IGI**



March 17, 2026  
IGI Report No **LG780644615**  
**TRIANGULAR MODIFIED BRILLIANT**  
**6.82 X 6.83 X 3.51 MM**  
Carat Weight **1.09 CARAT**  
Color Grade **O-P**  
Clarity Grade **VVS 2**  
Depth **51.4%**  
Table **60%**  
Girdle **Medium to Slightly Thick (Faceted)**  
Culet **Pointed**  
Polish **EXCELLENT**  
Symmetry **EXCELLENT**  
Fluorescence **NONE**  
Inscription(s) **IGI LG780644615**  
Comments: This Laboratory Grown Diamond was created by Chemical Vapor Deposition (CVD) growth process.  
Type IIa