



**ELECTRONIC COPY**

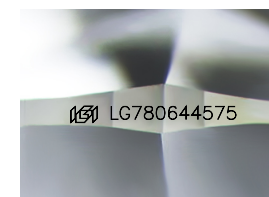
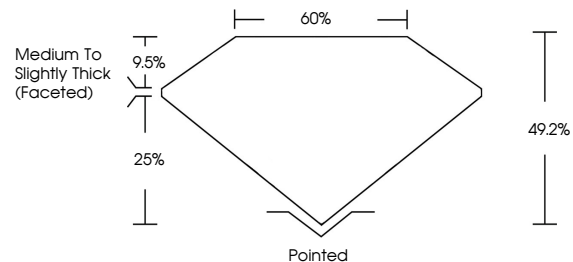
LG780644575  
Report verification at igi.org



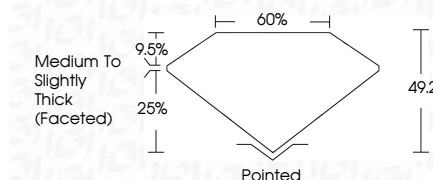
March 16, 2026  
IGI Report Number **LG780644575**  
Description **LABORATORY GROWN DIAMOND**  
Shape and Cutting Style **TRIANGULAR MODIFIED  
BRILLIANT**  
Measurements **8.53 X 8.65 X 4.26 MM**  
**GRADING RESULTS**  
Carat Weight **2.09 CARATS**  
Color Grade **Q-R**  
Clarity Grade **VS 1**

March 16, 2026  
IGI Report Number **LG780644575**  
Description **LABORATORY GROWN DIAMOND**  
Shape and Cutting Style **TRIANGULAR MODIFIED  
BRILLIANT**  
Measurements **8.53 X 8.65 X 4.26 MM**  
**GRADING RESULTS**  
Carat Weight **2.09 CARATS**  
Color Grade **Q-R**  
Clarity Grade **VS 1**

**PROPORTIONS**



Sample Image Used



**ADDITIONAL GRADING INFORMATION**

Polish **EXCELLENT**  
Symmetry **EXCELLENT**  
Fluorescence **NONE**  
Inscription(s) **IGI LG780644575**

Comments: This Laboratory Grown Diamond was created by Chemical Vapor Deposition (CVD) growth process.  
Type IIa

**ADDITIONAL GRADING INFORMATION**

Polish **EXCELLENT**  
Symmetry **EXCELLENT**  
Fluorescence **NONE**  
Inscription(s) **IGI LG780644575**  
Comments: This Laboratory Grown Diamond was created by Chemical Vapor Deposition (CVD) growth process.  
Type IIa

**COLOR**

D E F G H I J Faint Very Light Light

**CLARITY**

FL	IF	VS <sup>1-2</sup>	VS <sup>1-2</sup>	SI <sup>1-2</sup>	I <sup>1-3</sup>
Flawless	Internally Flawless	Very Very Slightly Included	Very Slightly Included	Slightly Included	Included



**IGI**



March 16, 2026  
IGI Report No **LG780644575**  
**TRIANGULAR MODIFIED BRILLIANT**  
8.53 X 8.65 X 4.26 MM  
Carat Weight **2.09 CARATS**  
Color Grade **Q-R**  
Clarity Grade **VS 1**  
Table **49.2%**  
Depth **25%**  
Girdle **Medium to Slightly Thick (Faceted)**  
Culet **Pointed**  
Polish **EXCELLENT**  
Symmetry **EXCELLENT**  
Fluorescence **NONE**  
Inscription(s) **IGI LG780644575**

Comments: This Laboratory Grown Diamond was created by Chemical Vapor Deposition (CVD) growth process.  
Type IIa